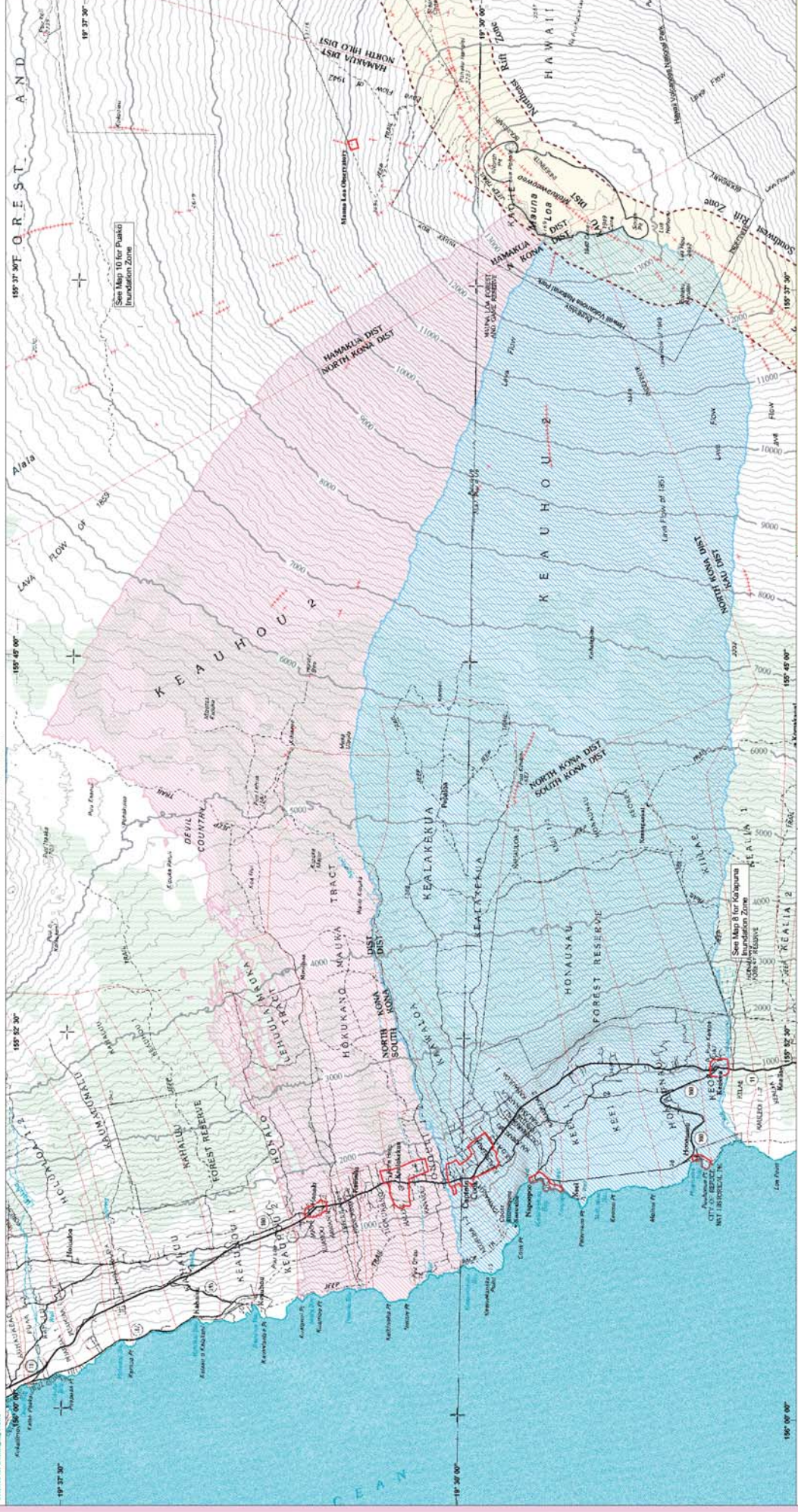




U.S. DEPARTMENT OF THE INTERIOR
U.S. GEOLOGICAL SURVEY

Submitted in cooperation with the
FEDERAL EMERGENCY MANAGEMENT AGENCY
and the
COUNTY OF HAWAII

MISCELLANEOUS FIELD STUDIES MAP MF-281
SHEET 1 OF 10



- Explanation**
- Kealiikēua inundation zone
 - Hōnauāu inundation zone
 - Keolu inundation zone
 - Rift zone buffer
 - Major road
 - Minor road
 - Community/infrastructure
 - Feature and contour
 - Contour interval 100 feet

Base map
USGS 1:50,000-scale County Geologic Series
Map MF-281, Sheet 1 of 10
Horizontal datum: 1983
Vertical datum: 1983
Projection: UTM
Zone: 18N
Scale: 1:50,000
This map is a derivative of the base map and is not to be used for navigation purposes.

Map location

Scale
1" = 10,000 feet
1 cm = 300 meters

WARNING: Lava-flow inundation analysis only valid for lava flows once they have moved outside the rift-zone buffer (yellow zone bounded by dashed line)

Available online at <http://geopubs.wr.usgs.gov/mf-map281/>
Approved for publication August 5, 2002

Maps Showing Lava Inundation Zones for Mauna Loa, Hawaii
by
Frank A. Trusdell, Peter Graves, and Christopher R. Tincher
2002