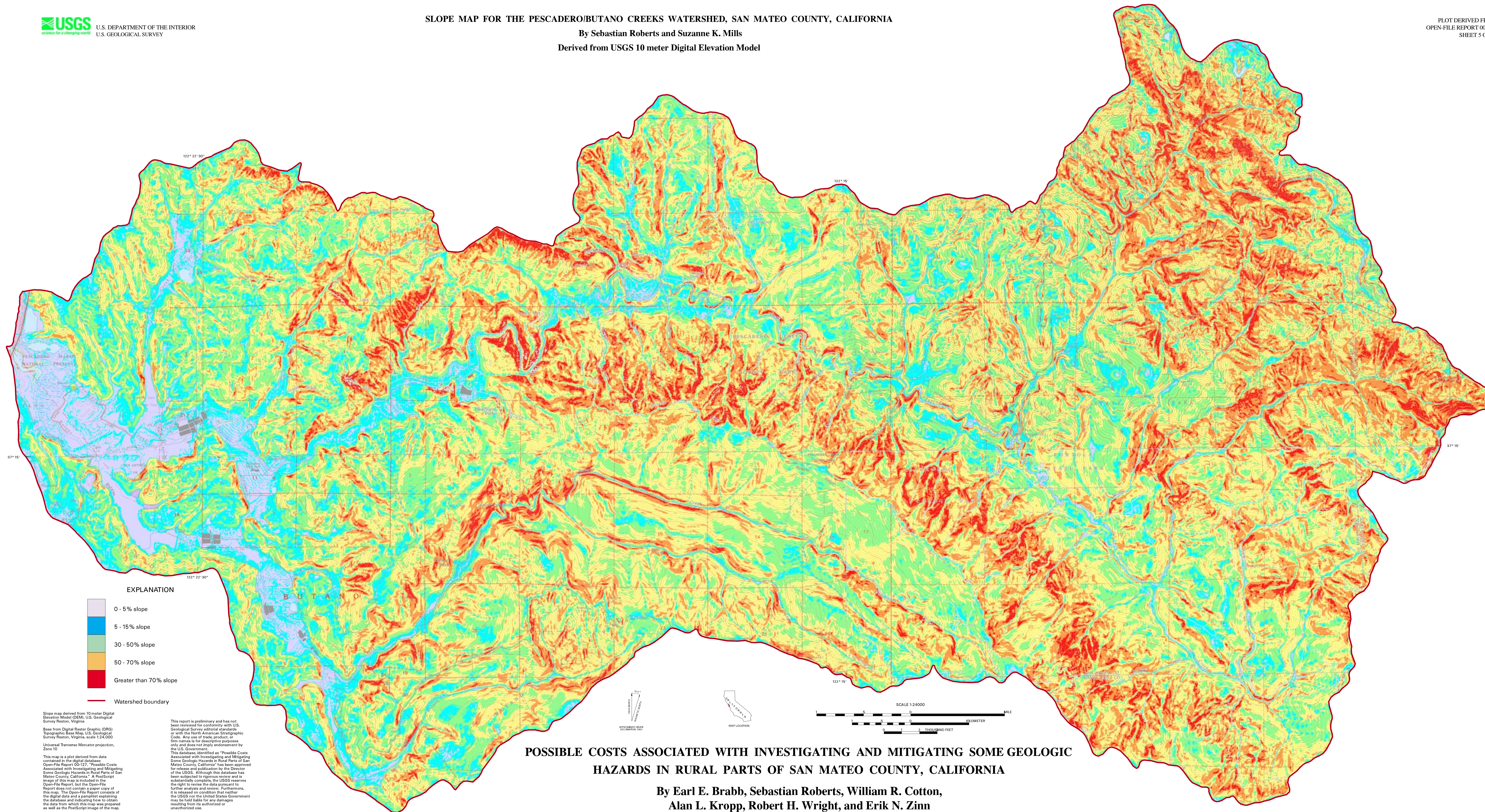


**SLOPE MAP FOR THE PESCADERO/BUTANO CREEKS WATERSHED, SAN MATEO COUNTY, CALIFORNIA**  
By Sebastian Roberts and Suzanne K. Mills  
Derived from USGS 10 meter Digital Elevation Model



**EXPLANATION**

- 0 - 5% slope
- 5 - 15% slope
- 30 - 50% slope
- 50 - 70% slope
- Greater than 70% slope
- Watershed boundary

Slope map derived from 10 meter Digital Elevation Model (DEM), U.S. Geological Survey Reston, Virginia

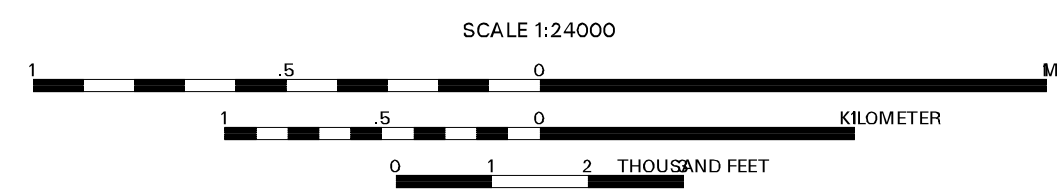
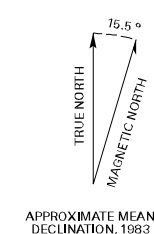
Base from Digital Raster Graphic (DRG) Topographic Base Map, U.S. Geological Survey Reston, Virginia, scale 1:24,000

Universal Transverse Mercator projection, Zone 10

This map is a plot derived from data contained in the digital database Open-File Report 00-127, "Possible Costs Associated with Investigating and Mitigating Some Geologic Hazards in Rural Parts of San Mateo County, California." A PostScript image of this map is included in the Open-File Report, but the Open-File Report does not contain a paper copy of this map. The Open-File Report consists of the digital data and a pamphlet explaining the database and indicating how to obtain the data from which this map was prepared as well as the PostScript image of the map.

This report is preliminary and has not been reviewed for conformity with U.S. Geological Survey editorial standards, or with the North American Stratigraphic Code. Any use of trade product, or firm names is for descriptive purposes only and does not imply endorsement by the U.S. Government.

This database, identified as "Possible Costs Associated with Investigating and Mitigating Some Geologic Hazards in Rural Parts of San Mateo County, California," has been approved for release and publication by the Director of the USGS. Although the database has been subjected to rigorous review and is substantially complete, the USGS reserves the right to revise the data pursuant to further analysis and review. Furthermore, it is released on condition that neither the USGS nor the United States Government may be held liable for any damages resulting from its authorized or unauthorized use.



**POSSIBLE COSTS ASSOCIATED WITH INVESTIGATING AND MITIGATING SOME GEOLOGIC HAZARDS IN RURAL PARTS OF SAN MATEO COUNTY, CALIFORNIA**

By Earl E. Brabb, Sebastian Roberts, William R. Cotton,  
Alan L. Kropp, Robert H. Wright, and Erik N. Zinn  
2000