

figure3. Model of basement rocks across profile line G5b, based on basement gravity. Abbreviations are as follows: UCA, upper carbonate aquifer, ECU, Eleana confining unit, LCA, lower carbonate aquifer, SCU, siliceous confining unit. Red dots on the surface profile represent elevation points on the basement surface, red dots within the model represent vertices in the model blocks, and v's represent elevation points on the topographic surface.

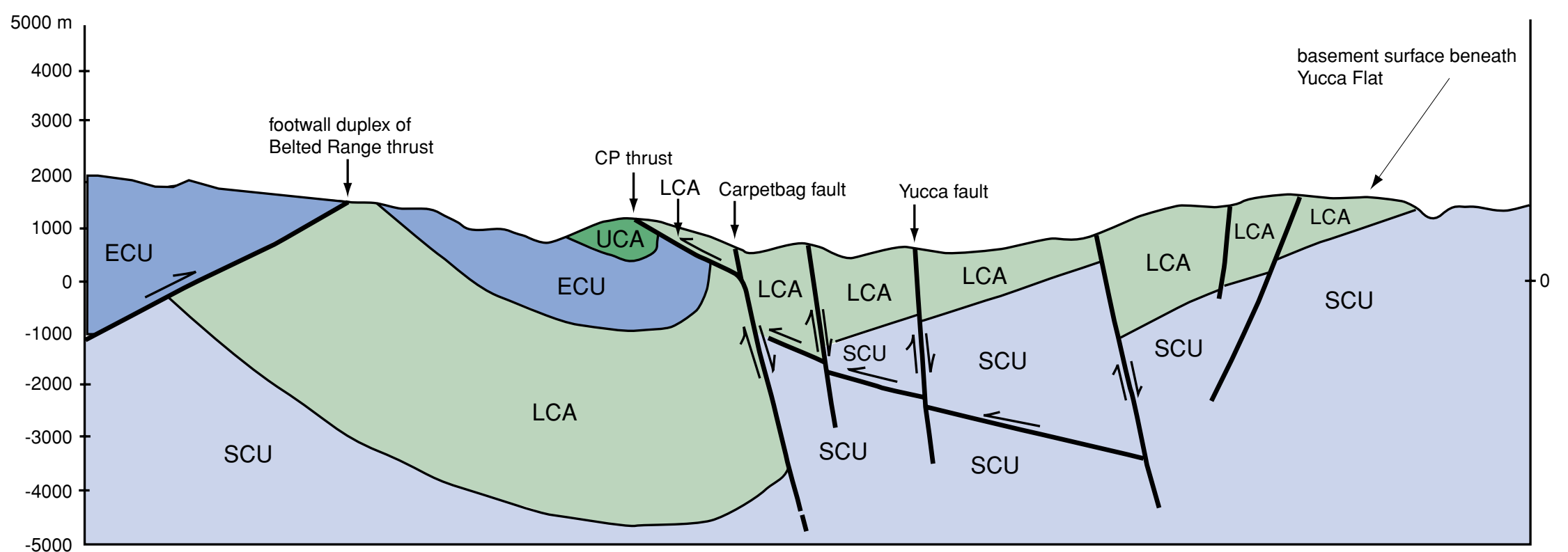


figure 4. Geologic cross-section interpretation of basement gravity model. Abbreviations are the same as those used in figure 3.