



U.S. DEPARTMENT OF THE INTERIOR  
U.S. GEOLOGICAL SURVEY

**Principal Facts for Gravity Stations in the Antelope Valley–Bedell Flat area,  
West–Central Nevada**

*By* Eleanore B. Jewel<sup>1</sup>, David A. Ponce<sup>1</sup>, *and* Robert L. Morin<sup>1</sup>

Open–File Report 00–506

2000

U.S. DEPARTMENT OF THE INTERIOR  
BRUCE BABBITT, Secretary

U.S. GEOLOGICAL SURVEY  
Charles G. Groat, Director

This report is preliminary and has not been reviewed for conformity with U.S. Geological Survey editorial standards or with the North American Stratigraphic Code. Any use of trade, firm, or product names is for descriptive purposes only and does not imply endorsement by the U.S. Government.

<sup>1</sup> U.S. Geological Survey, 345 Middlefield Road, Menlo Park, CA 94025

## Table of Contents

|                                  |   |
|----------------------------------|---|
| INTRODUCTION.....                | 1 |
| ACKNOWLEDGMENTS.....             | 1 |
| GRAVITY METHODS.....             | 1 |
| ISOSTATIC GRAVITY ANOMALIES..... | 6 |
| PHYSICAL PROPERTY DATA.....      | 6 |
| REFERENCES CITED.....            | 9 |

## Illustrations

|  |   |
|--|---|
| FIGURE 1. INDEX MAP OF STUDY AREA..... | 2 |
| 2. TOPOGRAPHIC MAP OF STUDY AREA.....  | 3 |
| 3. ISOSTATIC GRAVITY MAP.....          | 4 |
| 4. LOCATION OF ROCK SAMPLES.....       | 8 |

## Tables

|  |    |
|--|----|
| TABLE 1. PHYSICAL PROPERTY MEASUREMENTS FOR ROCKS IN THE ANTELOPE VALLEY-BEDELL FLAT AREA..... | 7  |
| 2. PRINCIPAL FACTS OF GRAVITY STATIONS IN THE ANTELOPE VALLEY-BEDELL FLAT AREA.....            | 10 |

## INTRODUCTION

In April 2000 the U.S. Geological Survey (USGS) established 211 gravity stations in the Antelope Valley and Bedell Flat area of west-central Nevada (Figure 1). The stations were located about 15 miles north of Reno, Nevada, southwest of Dogskin Mountain, and east of Petersen Mountain, concentrated in Antelope Valley and Bedell Flat (figure 2). The ranges in this area primarily consist of normal-faulted Cretaceous granitic rocks, with some volcanic and metavolcanic rocks.

The purpose of the survey was to characterize the hydrogeologic framework of Antelope Valley and Bedell Flat in support of future hydrologic investigations. The information developed during this study can be used in ground-water models.

Gravity data were collected between latitude 39°37.5' and 40°00' N and longitude 119°37.5' and 120°00' W. The stations were located on the Seven Lakes Mountain, Dogskin Mountain, Granite Peak, Bedell Flat, Fraser Flat, and Reno NE 7.5 minute quadrangles. All data were tied to secondary base station RENO-A located on the campus of the University of Nevada at Reno (UNR) in Reno, Nevada (latitude 39°32.30' N, longitude 119°48.70' W, observed gravity value 979674.69 mGal). The value for observed gravity was calculated by multiple ties to the base station RENO (latitude 39°32.30' N, longitude 119°48.70' W, observed gravity value 979674.65 mGal), also on the UNR campus. The isostatic gravity map (figure 3) includes additional data sets from the following sources: 202 stations from a Geological Survey digital data set (Ponce, 1997), and 126 stations from Thomas C. Carpenter (written commun., 1998).

## ACKNOWLEDGMENTS

This study was prepared in cooperation with the Washoe County Department of Water Resources and with David L. Berger of the U.S. Geological Survey, Water Resources Division.

## GRAVITY METHODS

All gravity data were reduced using standard gravity corrections, including: (a) the earth-tide correction, which corrects for tidal effects of the moon and sun; (b) instrument drift correction, which compensates for drift in the instrument's spring; (c) the latitude correction, which incorporates the variation of the Earth's gravity with latitude; (d) the free-air correction, which accounts for the variation in gravity due to elevation relative to sea-level; (e) the Bouguer correction, which corrects for the attraction of material between the station and sea-level; (f) the curvature correction, which corrects the Bouguer correction for the effect of the Earth's curvature; (g) the terrain correction, which removes the effect of topography to a radial distance of 166.7 km; and (h) the isostatic correction, which removes long-wavelength variations in the gravity field inversely related to topography.



Figure 1. Index map of study area.

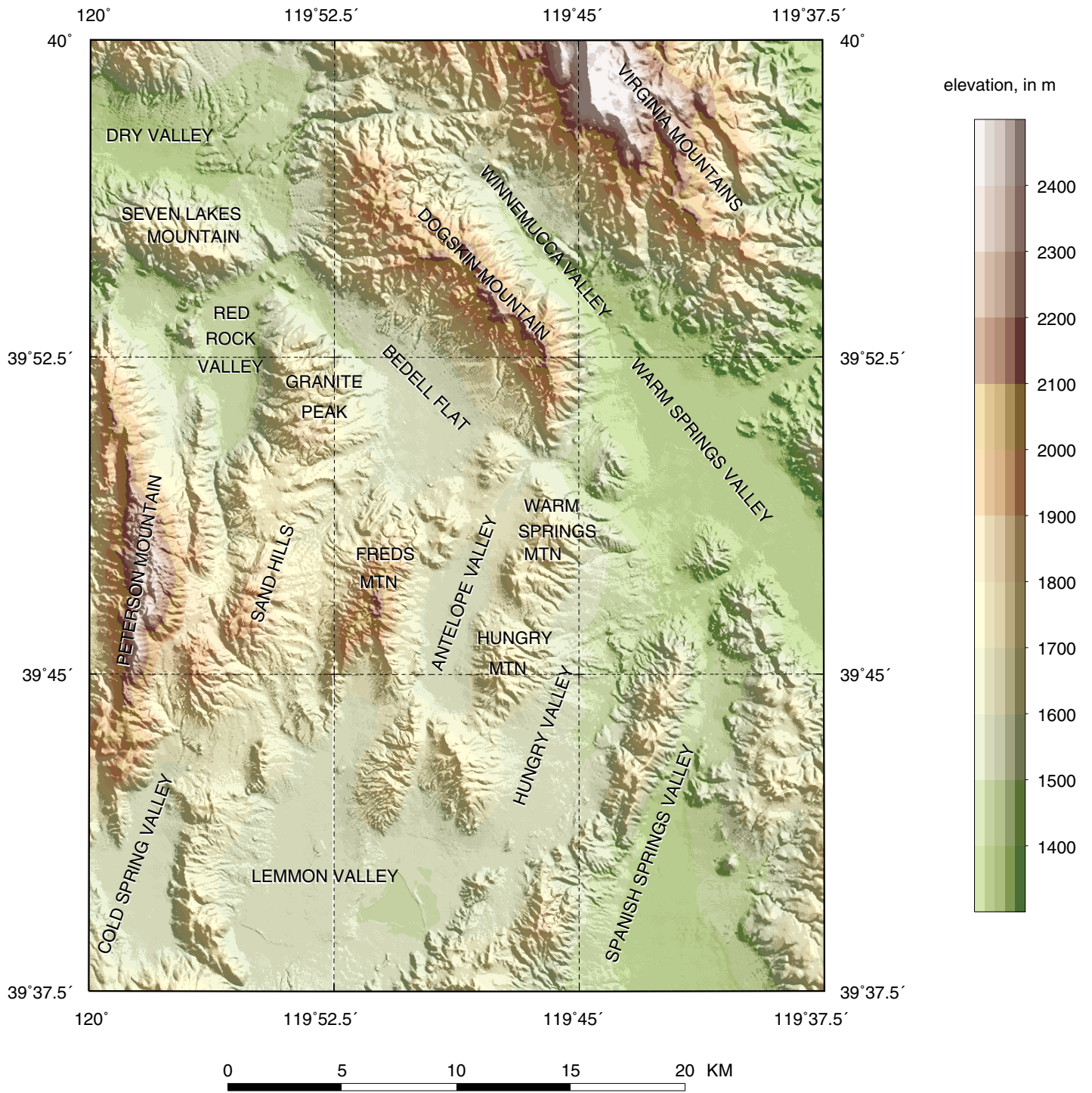


Figure 2. Topographic map of study area.

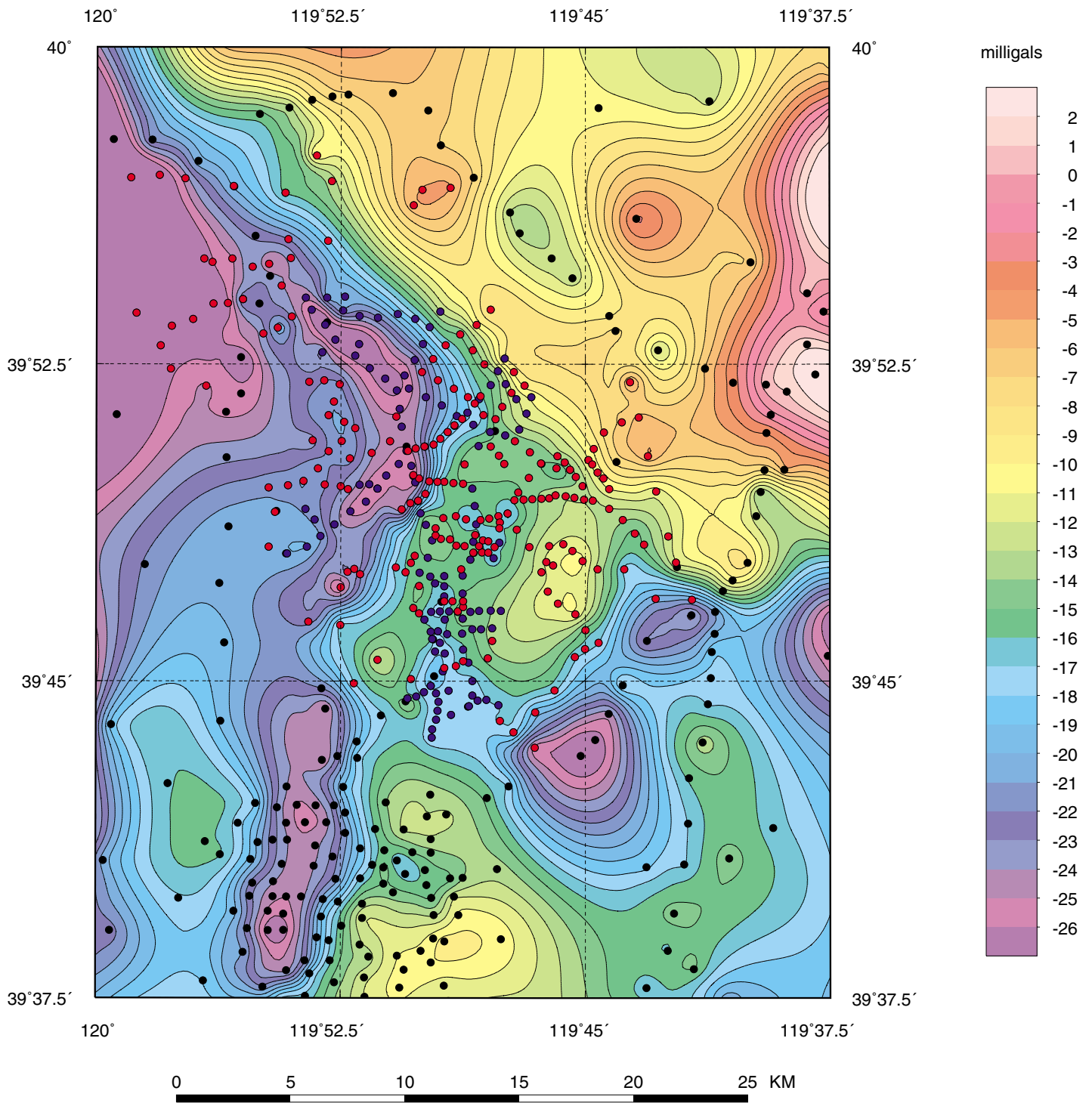


Figure 3. Isostatic gravity map. Black dots, previous data (Ponce, 1997); blue dots, Carpenter data (written commun., 1998); red dots, new USGS data.

Conversion of meter readings to milligals was made using factory calibration constants. The gravity meter (LaCoste and Romberg G17C) also has an additional calibration factor (1.00078), which has been determined by multiple gravity readings over the Mt. Hamilton calibration loop east of San Jose, Calif. (Barnes and others, 1969). Observed gravity values were based on a time-dependant linear drift between successive base readings. Observed gravity values were referenced to the International Gravity Standardization Net 1971 (IGSN 71) gravity datum (Morelli, 1974, p. 18). Free-air gravity anomalies were calculated using the Geodetic Reference System 1967 formula for theoretical gravity on the ellipsoid (International Union of Geodesy and Geophysics, 1971, p. 60) and Swick's formula (1942, p. 65) for the free-air correction. Bouguer, curvature, and terrain corrections were added to the free-air correction to determine the complete Bouguer anomaly at a standard reduction density of  $2.67 \text{ g/cm}^3$ . Finally, a regional isostatic gravity field was removed from the Bouguer field assuming an Airy-Heiskanen model for isostatic compensation of topographic loads (Jachens and Roberts, 1981) with an assumed crustal thickness of 25 km, a crustal density of  $2.67 \text{ g/cm}^3$ , and a density contrast across the base of the model of  $4.0 \text{ g/cm}^3$ . Gravity values are expressed in milligals (mGal), a unit of acceleration or gravitational force per mass equal to  $10^{-5} \text{ m/s}^2$ .

Station locations were obtained using a portable Global Positioning System (GPS) unit and have a horizontal uncertainty of about 10 m (30 ft) or less. Elevations were obtained using a differential GPS; Trimble Real Time Kinematic (RTK) Series 4400 GPS receivers. These measurements have a vertical uncertainty of 5–10 cm (2–4 in). Most stations were surveyed in real time with a 6-m (20 ft) radio antenna located at a base station.

Terrain corrections, which account for the variation of topography near a gravity station, were computed using a combination of manual and digital methods. Terrain corrections consist of a three-part process: the innermost or field terrain correction (estimated in the field and typically extending to a radial distance of 53 to 68 m), inner-zone terrain correction, and outer-zone terrain correction.

Inner-zone terrain corrections were made using either Hayford and Bowie (1912) or Hammer (1939) systems that divide the terrain surrounding a gravity station into zones and equal area compartments. Average elevations for each compartment were manually estimated from the largest scale topographic maps available, usually USGS 1:24,000-scale maps. The terrain corrections were then calculated based on the average estimated elevation of each compartment. Inner-zone terrain corrections typically extend to a radial distance of 0.59 to 2.29 km. With the advent of computer processing and the availability of detailed digital elevation models (DEMs), modern day inner-zone terrain corrections were computed using USGS 7.5' DEMs with a resolution of 30 m derived from USGS 1:24,000-scale topographic maps.

Outer-zone terrain corrections, to a radial distance of 166.7 km, were computed using a DEM derived from USGS 1:250,000-scale topographic maps and an automated procedure (Plouff, 1966; Plouff, 1977; Godson and Plouff, 1988). Digital terrain corrections are calculated by computing the gravity effect of each grid cell using the distance and difference in elevation of each grid cell from the gravity station. Principal facts of these data are shown in table 2.

## ISOSTATIC GRAVITY ANOMALIES

In general, isostatic gravity anomalies reflect lateral (horizontal) density variations in the middle to upper crust. Thus, gravity anomalies can be used to infer the subsurface structure of known or unknown geologic features. Gravity anomalies often reflect carbonate rocks, calderas, deep sedimentary basins, and linear geologic features such as faults. Many of these features play an important role as aquifers or confining units and their distribution is important to the understanding of the hydrogeologic framework of the area. Pre-Cenozoic granitic rocks underlie most of the region and their subsurface distribution is especially important in evaluating the hydrogeology of an area. Tertiary volcanic rocks and Quaternary and Tertiary alluvial deposits occur throughout the study area, and may play an important role in the hydrology of the study area.

As expected, gravity highs occur over pre-Cenozoic metavolcanic and granitic rocks that typically have densities on the order of  $2.67 \text{ g/cm}^3$ . Gravity highs occur over the Dogskin Mountain, Virginia Mountains, and Warm Springs Mountain. Gravity lows over Antelope Valley and Bedell Flat reflect shallow sedimentary basins filled with low-density alluvial deposits with densities ranging from about  $1.60$  to  $2.20 \text{ g/cm}^3$  or volcanic rocks with densities of about  $2.20$  to  $2.50 \text{ g/cm}^3$ .

The diverse physical properties of lithologies that underlie this region are well suited to geophysical investigations. The contrast in density between pre-Cenozoic basement and overlying unconsolidated alluvium, for example, produces a distinctive pattern of gravity anomalies that can be used to determine the depth of pre-Cenozoic basement in three dimensions. In most parts of the study area, this surface corresponds to the top of the granitic rocks, an important element of the hydrogeologic framework.

## PHYSICAL PROPERTY DATA

Along with gravity measurements, rock samples were collected at locations shown in figure 4. Densities were measured in the laboratory using a precision electronic balance. Grain density, saturated bulk density, and dry bulk density were measured for each sample. Magnetic susceptibilities were measured using a Geophysica KT-5 susceptibility meter. These measurements are useful for gravity modeling and gravity inversion calculations. These data along with the rock identification and mapped geologic unit (Bonham, 1969) are shown in table 1.



Table 1. Physical property measurements for rocks in the Antelope Valley–Bedell Flat area.

[Latitudes and longitudes are on the North American Datum 1927 (NAD27). Kgd, Cretaceous granodiorite; mv, metavolcanic; Susc, magnetic susceptibility; Th, rhyolite. Mapped geologic units from Bonham (1969).]

| Station id | Latitude |         | Longitude |         | Grain bulk | Density (g/cm <sup>3</sup> ) |          | Susc<br>cgs units<br>x 10 <sup>-3</sup> | Map unit |
|------------|----------|---------|-----------|---------|------------|------------------------------|----------|---|----------|
|            | degrees  | minutes | degrees   | minutes |            | Saturated bulk               | Dry bulk |   |          |
| 00REN012   | 39       | 50.70   | 119       | 53.37   | 2.61       | 2.58                         | 2.57     | 0.22                                    | Kgd      |
| 00REN016   | 39       | 55.01   | 119       | 54.04   | 2.47       | 2.28                         | 2.15     | 0.11                                    | Th       |
| 00REN020   | 39       | 57.44   | 119       | 53.25   | 2.32       | 2.19                         | 2.09     | 0.01                                    | Th       |
| 00REN039A  | 39       | 47.74   | 119       | 45.98   | 3.04       | 3.03                         | 3.03     | 6.52                                    | Kgd      |
| 00REN039B  | 39       | 47.74   | 119       | 45.98   | 3.01       | 2.98                         | 2.97     | 4.36                                    | Kgd      |
| 00REN041   | 39       | 48.24   | 119       | 45.68   | 2.76       | 2.74                         | 2.72     | 1.97                                    | Kgd      |
| 00REN061   | 39       | 46.65   | 119       | 48.91   | 2.73       | 2.70                         | 2.68     | 1.32                                    | Kgd      |
| 00REN076A  | 39       | 53.79   | 119       | 47.91   | 2.79       | 2.78                         | 2.77     | 1.70                                    | Kgd      |
| 00REN076B  | 39       | 53.79   | 119       | 47.91   | 2.73       | 2.71                         | 2.69     | 1.81                                    | Kgd      |
| 00REN085   | 39       | 50.33   | 119       | 47.65   | 2.71       | 2.68                         | 2.66     | 1.20                                    | Kgd      |
| 00REN086   | 39       | 50.14   | 119       | 47.49   | 2.72       | 2.68                         | 2.65     | 1.55                                    | Kgd      |
| 00REN092   | 39       | 48.33   | 119       | 48.14   | 2.46       | 2.38                         | 2.32     | 0.28                                    | Kgd      |
| 00REN093   | 39       | 48.31   | 119       | 47.98   | 2.32       | 2.28                         | 2.25     | 0.02                                    | Kgd      |
| 00REN104   | 39       | 53.36   | 119       | 54.44   | 2.62       | 2.60                         | 2.60     | 0.53                                    | Kgd      |
| 00REN112   | 39       | 52.03   | 119       | 52.54   | 2.61       | 2.57                         | 2.55     | 0.15                                    | Kgd      |
| 00REN141   | 39       | 49.33   | 119       | 46.11   | 2.73       | 2.69                         | 2.67     | 1.44                                    | Kgd      |
| 00REN164A  | 39       | 49.55   | 119       | 44.27   | 2.73       | 2.70                         | 2.69     | 1.57                                    | Kgd      |
| 00REN164B  | 39       | 49.55   | 119       | 44.27   | 2.81       | 2.77                         | 2.75     | 0.77                                    | Kgd      |
| 00REN169   | 39       | 48.86   | 119       | 49.35   | 2.74       | 2.72                         | 2.71     | 1.74                                    | Kgd      |
| 00REN177   | 39       | 47.96   | 119       | 50.23   | 2.71       | 2.69                         | 2.67     | 0.89                                    | mv       |
| 00REN180   | 39       | 47.69   | 119       | 50.81   | 2.75       | 2.72                         | 2.70     | 0.03                                    | mv       |
| 00DAP101A  | 39       | 51.81   | 119       | 53.42   | 2.63       | 2.54                         | 2.48     | 1.17                                    | Kgd      |
| 00DAP101B  | 39       | 51.81   | 119       | 53.42   | 2.63       | 2.56                         | 2.51     | 1.09                                    | Kgd      |
| 00DAP102   | 39       | 50.65   | 119       | 53.55   | 2.65       | 2.63                         | 2.62     | 0.37                                    | Kgd      |
| 00DAP103   | 39       | 51.99   | 119       | 47.04   | 2.70       | 2.68                         | 2.67     | 0.97                                    | Kgd      |
| 00DAP104   | 39       | 53.68   | 119       | 56.67   | 2.40       | 2.36                         | 2.34     | 0.13                                    | Th       |
| 00DAP105   | 39       | 54.89   | 119       | 56.53   | 2.19       | 2.11                         | 2.05     | 0.04                                    | Th       |
| 00DAP106A  | 39       | 47.82   | 119       | 50.31   | 2.80       | 2.77                         | 2.75     | 1.22                                    | mv       |
| 00DAP106B  | 39       | 47.82   | 119       | 50.31   | 2.78       | 2.78                         | 2.77     | 4.19                                    | mv       |

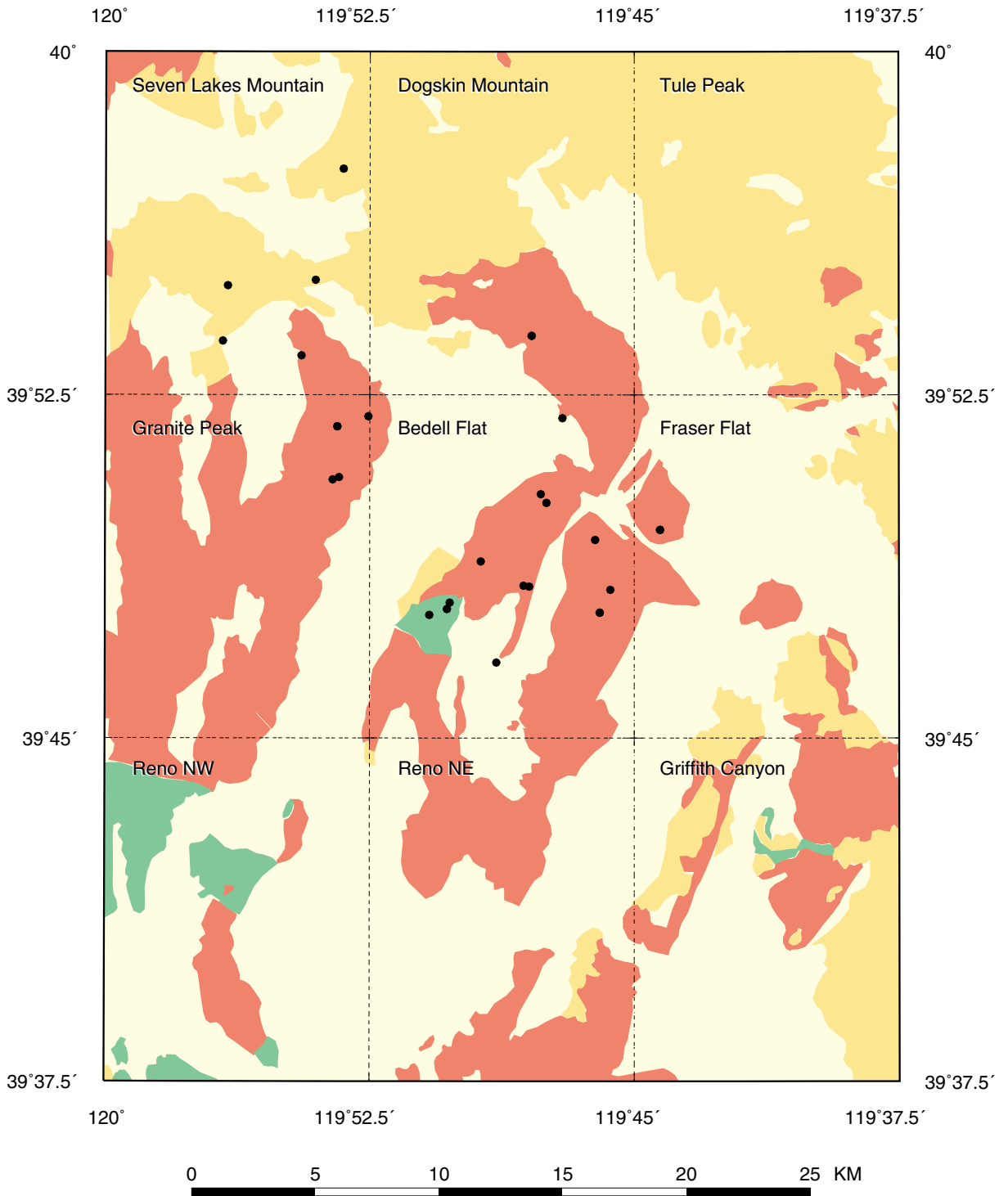


Figure 4. Location of rock samples are shown as black dots. Geologic units from Bonham (1969): Yellow, alluvium; orange, Tertiary volcanic rocks; red, granitic rocks; green, pre-Cenozoic rocks.

## REFERENCES CITED

- Barnes, D.F., Oliver, H.W., and Robbins, S.L., 1969, Standardization of gravimeter calibrations in the Geological Survey: *Eos, Transactions, American Geophysical Union*, v. 50, no. 10, p. 626–627.
- Bonham, H.F., 1969, Geology and mineral deposits of Washoe and Storey Counties, Nevada: Nevada Bureau of Mines and Geology Bulletin 70, 140 p.
- Godson, R.H., and Plouff, Donald, 1988, BOUGUER version 1.0, a microcomputer gravity–terrain–correction program: U.S. Geological Survey Open–File Report 88–644–A, Documentation, 22 p.; 88–644–B, Tables, 61 p., 88–644–C, 5 1/4–inch diskette.
- Hammer, Sigmund, 1939, Terrain corrections for gravimeter stations: *Geophysics*, v. 4, p. 184–194.
- Hayford, J.F., and Bowie, William, 1912, The effect of topography and isostatic compensation upon the intensity of gravity: U.S. Coast and Geodetic Survey Special Publication no. 10, 132 p.
- International Union of Geodesy and Geophysics, 1971, Geodetic Reference System 1967: International Association of Geodesy Special Publication no. 3, 116 p.
- Jachens, R.C., and Roberts, C.W., 1981, Documentation of a FORTRAN program, 'isocomp', for computing isostatic residual gravity: U.S. Geological Open–File Report 81–574, 26 p.
- Morelli, C., ed, 1974, the International gravity standardization net 1971: International Association of Geodesy Special Publication no. 4, 194 p.
- Plouff, Donald, 1966, Digital terrain corrections based on geographic coordinates [abs.]: *Geophysics*, v. 31, no. 6, p. 1208.
- Plouff, D., 1977, Preliminary documentation for a FORTRAN program to compute gravity terrain corrections based on topography digitized on a geographic grid: U.S. Geological Survey Open–File Report 77–535, 45 p.
- Ponce, D.A., 1997, Gravity data of Nevada: U.S. Geological Survey Digital Data Series DDS–42, 27 p., CD–ROM.
- Swick, C.A., 1942, Pendulum gravity measurements and isostatic reductions: U.S. Coast and Geodetic Survey Special Publication 232, 82 p.

Table 2. Principal facts of gravity stations in the Antelope Valley–Bedell Flat area.

[Latitudes and longitudes on the North American Datum 1927 (NAD27). CBA, complete Bouguer anomaly; Elev, elevation; FAA, free-air anomaly; ISO, isostatic anomaly; OG, observed gravity; SBA, simple Bouguer anomaly; TC, terrain correction. ]

| Station                    | Lat |       | Long |       | Elev<br>ft | OG<br>mGal | FAA<br>mGal | SBA<br>mGal | TC            |               | CBA<br>mGal | ISO<br>mGal |
|----------------------------|-----|-------|------|-------|------------|------------|-------------|-------------|---------------|---------------|-------------|-------------|
|                            | deg | min   | deg  | min   |            |            |             |             | inner<br>mGal | total<br>mGal |             |             |
| Previous data (Ponce 1997) |     |       |      |       |            |            |             |             |               |               |             |             |
| M 32                       | 39  | 53.74 | 119  | 37.69 | 4412.7     | 979738.06  | -6.70       | -157.21     | 0.09          | 1.84          | -156.70     | -2.07       |
| M 33                       | 39  | 54.18 | 119  | 38.19 | 4619.4     | 979727.50  | 1.51        | -156.04     | 1.08          | 3.26          | -154.14     | 0.42        |
| M 34                       | 39  | 52.96 | 119  | 38.19 | 4386.5     | 979741.88  | -4.16       | -153.77     | 0.25          | 1.84          | -153.25     | 1.69        |
| E1700                      | 39  | 40.76 | 119  | 59.78 | 5096.0     | 979654.25  | -7.01       | -180.82     | 0.06          | 1.38          | -180.86     | -20.55      |
| F 05                       | 39  | 42.58 | 119  | 57.79 | 5153.0     | 979657.12  | -1.51       | -177.26     | 0.05          | 2.73          | -175.96     | -16.18      |
| F 07                       | 39  | 48.02 | 119  | 54.17 | 5667.0     | 979633.69  | 15.30       | -177.98     | 0.23          | 1.44          | -178.01     | -20.11      |
| F 08                       | 39  | 51.37 | 119  | 56.02 | 4790.0     | 979685.88  | -19.91      | -183.28     | 0.22          | 2.15          | -182.52     | -25.21      |
| F 09                       | 39  | 57.82 | 119  | 59.49 | 4418.0     | 979716.38  | -33.91      | -184.59     | 0.01          | 1.67          | -184.25     | -28.77      |
| F 12                       | 39  | 47.70 | 119  | 42.19 | 4455.0     | 979714.75  | -17.10      | -169.04     | 0.02          | 0.90          | -169.48     | -12.41      |
| G 3X                       | 39  | 57.81 | 119  | 58.30 | 4483.0     | 979719.69  | -24.51      | -177.41     | 0.02          | 1.68          | -177.07     | -21.61      |
| G001D                      | 39  | 54.54 | 119  | 45.39 | 4584.0     | 979715.00  | -14.86      | -171.20     | 0.43          | 4.47          | -168.09     | -12.61      |
| G001S                      | 39  | 45.07 | 119  | 41.15 | 4592.0     | 979696.38  | -18.66      | -175.28     | 0.13          | 1.70          | -174.94     | -17.34      |
| G002D                      | 39  | 55.00 | 119  | 46.04 | 4685.0     | 979709.50  | -11.55      | -171.34     | 0.50          | 4.55          | -168.16     | -12.78      |
| G002S                      | 39  | 45.69 | 119  | 41.12 | 4565.0     | 979698.50  | -20.02      | -175.72     | 0.08          | 1.36          | -175.71     | -18.28      |
| G003R                      | 39  | 43.23 | 119  | 45.15 | 4944.0     | 979662.38  | -16.85      | -185.47     | 0.03          | 0.60          | -186.28     | -27.72      |
| G003S                      | 39  | 46.12 | 119  | 41.04 | 4493.0     | 979701.69  | -24.23      | -177.47     | 0.30          | 1.63          | -177.18     | -19.88      |
| G004D                      | 39  | 55.60 | 119  | 47.01 | 4870.0     | 979699.19  | -5.35       | -171.45     | 0.09          | 4.22          | -168.62     | -13.40      |
| G004R                      | 39  | 44.83 | 119  | 53.09 | 5399.0     | 979642.38  | 3.54        | -180.60     | 0.08          | 1.25          | -180.80     | -21.97      |
| G004S                      | 39  | 46.64 | 119  | 41.02 | 4461.0     | 979704.00  | -25.70      | -177.85     | 0.02          | 1.18          | -178.01     | -20.87      |
| G005D                      | 39  | 56.09 | 119  | 47.31 | 4880.0     | 979700.25  | -4.04       | -170.48     | 0.04          | 3.67          | -168.20     | -13.07      |
| G005R                      | 39  | 44.35 | 119  | 52.97 | 5346.0     | 979641.88  | -1.23       | -183.56     | 0.05          | 1.00          | -184.01     | -25.05      |
| G005S                      | 39  | 47.13 | 119  | 40.78 | 4421.0     | 979714.25  | -19.89      | -170.68     | 0.04          | 1.31          | -170.70     | -13.69      |
| G006D                      | 39  | 56.92 | 119  | 48.43 | 5123.0     | 979694.38  | 11.67       | -163.06     | 0.13          | 2.50          | -161.98     | -7.06       |
| G006S                      | 39  | 47.38 | 119  | 40.48 | 4397.0     | 979719.12  | -17.71      | -167.67     | 0.29          | 1.66          | -167.34     | -10.46      |
| G007S                      | 39  | 47.80 | 119  | 40.02 | 4375.0     | 979723.38  | -16.11      | -165.32     | 0.04          | 1.07          | -165.58     | -8.86       |
| G008D                      | 39  | 57.68 | 119  | 49.44 | 5472.0     | 979675.50  | 24.44       | -162.19     | 0.31          | 1.99          | -161.66     | -6.99       |
| G009D                      | 39  | 58.50 | 119  | 49.82 | 5280.0     | 979689.12  | 18.79       | -161.29     | 0.04          | 2.20          | -160.53     | -6.07       |
| G009S                      | 39  | 49.47 | 119  | 39.62 | 4243.0     | 979729.00  | -25.39      | -170.11     | 0.01          | 1.04          | -170.37     | -14.17      |
| G010D                      | 39  | 58.92 | 119  | 50.91 | 5271.0     | 979690.00  | 18.21       | -161.56     | 0.13          | 2.26          | -160.74     | -6.31       |
| G010S                      | 39  | 49.99 | 119  | 39.51 | 4242.0     | 979736.19  | -19.06      | -163.74     | 0.01          | 1.13          | -163.91     | -7.85       |
| G012D                      | 39  | 58.88 | 119  | 52.28 | 5124.0     | 979698.12  | 12.57       | -162.20     | 0.08          | 1.96          | -161.66     | -7.10       |
| G012S                      | 39  | 50.87 | 119  | 39.45 | 4335.0     | 979736.12  | -11.71      | -159.56     | 0.07          | 1.09          | -159.79     | -4.02       |
| G013D                      | 39  | 58.83 | 119  | 52.78 | 4977.0     | 979706.38  | 7.11        | -162.64     | 0.10          | 1.86          | -162.18     | -7.53       |
| G013S                      | 39  | 51.30 | 119  | 39.31 | 4235.0     | 979745.00  | -12.86      | -157.30     | 0.03          | 1.46          | -157.14     | -1.47       |
| G014D                      | 39  | 58.75 | 119  | 53.40 | 4867.0     | 979711.25  | 1.79        | -164.20     | 0.08          | 1.62          | -163.98     | -9.22       |
| G015D                      | 39  | 58.57 | 119  | 54.10 | 4784.0     | 979712.00  | -5.04       | -168.21     | 0.03          | 1.35          | -168.24     | -13.36      |
| G015S                      | 39  | 51.85 | 119  | 38.81 | 4212.0     | 979749.38  | -11.44      | -155.09     | 0.17          | 2.00          | -154.39     | 1.04        |
| G016D                      | 39  | 58.42 | 119  | 55.00 | 4712.0     | 979713.88  | -9.69       | -170.40     | 0.08          | 1.36          | -170.41     | -15.38      |
| G016S                      | 39  | 52.25 | 119  | 37.94 | 4215.0     | 979753.50  | -7.65       | -151.41     | 0.01          | 1.83          | -150.87     | 4.28        |
| G018D                      | 39  | 57.30 | 119  | 56.89 | 4509.0     | 979718.75  | -22.21      | -175.99     | 0.02          | 1.46          | -175.88     | -20.31      |
| G023D                      | 39  | 56.70 | 119  | 55.78 | 4573.0     | 979714.19  | -19.90      | -175.87     | 0.02          | 1.50          | -175.72     | -20.05      |
| G024D                      | 39  | 55.54 | 119  | 55.13 | 4895.0     | 979690.25  | -11.81      | -178.76     | 0.11          | 1.44          | -178.72     | -22.80      |
| G026D                      | 39  | 54.59 | 119  | 54.68 | 4868.0     | 979689.62  | -13.63      | -179.66     | 0.08          | 1.26          | -179.79     | -23.55      |
| G027D                      | 39  | 53.93 | 119  | 55.01 | 4753.0     | 979696.38  | -16.67      | -178.78     | 0.05          | 1.36          | -178.80     | -22.31      |
| G027S                      | 39  | 45.95 | 119  | 43.11 | 4623.0     | 979690.62  | -22.84      | -180.52     | 0.04          | 1.01          | -180.87     | -23.24      |
| G028S                      | 39  | 46.56 | 119  | 41.75 | 4519.0     | 979697.25  | -26.83      | -180.96     | 0.02          | 0.90          | -181.41     | -24.15      |
| G029D                      | 39  | 52.66 | 119  | 55.56 | 4724.0     | 979691.12  | -22.80      | -183.92     | 0.01          | 1.34          | -183.96     | -27.10      |
| G030D                      | 39  | 51.80 | 119  | 55.56 | 4761.0     | 979688.38  | -20.76      | -183.14     | 0.01          | 1.55          | -182.97     | -25.81      |
| G033D                      | 39  | 50.30 | 119  | 56.01 | 4932.0     | 979676.69  | -14.16      | -182.37     | 0.41          | 2.93          | -180.85     | -23.29      |
| G033S                      | 39  | 52.02 | 119  | 39.46 | 4362.0     | 979740.50  | -6.49       | -155.26     | 0.25          | 1.70          | -154.88     | 0.55        |
| G034D                      | 39  | 48.66 | 119  | 55.94 | 5293.0     | 979654.12  | -0.39       | -180.91     | 0.64          | 4.10          | -178.26     | -20.34      |
| G035S                      | 39  | 52.06 | 119  | 40.47 | 4368.0     | 979736.12  | -10.37      | -159.35     | 0.17          | 1.59          | -159.08     | -3.51       |

Table 2. Principal facts of gravity stations in the Antelope Valley–Bedell Flat area.— Continued

| Station | Lat |       | Long |       | Elev<br>ft | OG<br>mGal | FAA<br>mGal | SBA<br>mGal | TC            |               | CBA<br>mGal | ISO<br>mGal |
|---------|-----|-------|------|-------|------------|------------|-------------|-------------|---------------|---------------|-------------|-------------|
|         | deg | min   | deg  | min   |            |            |             |             | inner<br>mGal | total<br>mGal |             |             |
| G037S   | 39  | 52.39 | 119  | 41.33 | 4386.0     | 979733.19  | -12.08      | -161.67     | 0.03          | 1.50          | -161.50     | -5.93       |
| G039D   | 39  | 45.12 | 119  | 49.63 | 5115.0     | 979663.00  | -2.98       | -177.43     | 0.08          | 1.29          | -177.57     | -19.06      |
| G039S   | 39  | 52.83 | 119  | 42.76 | 4381.0     | 979727.62  | -18.79      | -168.22     | 0.03          | 1.80          | -167.74     | -12.08      |
| G040D   | 39  | 45.99 | 119  | 49.67 | 5146.0     | 979662.88  | -1.45       | -176.97     | 0.04          | 1.73          | -176.66     | -18.39      |
| G041D   | 39  | 46.88 | 119  | 49.41 | 5188.0     | 979663.62  | 1.88        | -175.06     | 0.03          | 1.55          | -174.94     | -16.99      |
| G041S   | 39  | 53.29 | 119  | 44.07 | 4372.0     | 979731.69  | -16.23      | -165.35     | 0.03          | 3.28          | -163.39     | -7.67       |
| G042D   | 39  | 48.03 | 119  | 48.42 | 5237.0     | 979664.38  | 5.57        | -173.04     | 0.02          | 0.97          | -173.51     | -15.97      |
| G042S   | 39  | 53.64 | 119  | 44.27 | 4414.0     | 979728.12  | -16.39      | -166.94     | 0.08          | 3.49          | -164.78     | -9.12       |
| G043D   | 39  | 48.97 | 119  | 47.38 | 5241.0     | 979664.62  | 4.77        | -173.99     | 0.02          | 0.88          | -174.54     | -17.40      |
| G044D   | 39  | 49.85 | 119  | 50.28 | 5118.0     | 979664.88  | -7.81       | -182.37     | 0.01          | 0.91          | -182.88     | -25.65      |
| G045D   | 39  | 50.00 | 119  | 45.47 | 4885.0     | 979690.62  | -4.22       | -170.83     | 0.02          | 1.37          | -170.86     | -14.14      |
| G046D   | 39  | 50.14 | 119  | 46.35 | 5039.0     | 979680.38  | -0.17       | -172.03     | 0.08          | 1.42          | -172.02     | -15.30      |
| G047D   | 39  | 50.55 | 119  | 50.49 | 5097.0     | 979668.25  | -7.42       | -181.26     | 0.01          | 0.85          | -181.84     | -24.77      |
| G048D   | 39  | 50.92 | 119  | 47.77 | 5199.0     | 979672.88  | 6.22        | -171.10     | 0.03          | 1.15          | -171.39     | -14.74      |
| G049D   | 39  | 53.49 | 119  | 52.92 | 4848.0     | 979685.38  | -18.09      | -183.44     | 0.04          | 1.88          | -182.95     | -26.50      |
| G050D   | 39  | 56.56 | 119  | 54.21 | 4797.0     | 979705.69  | -7.14       | -170.75     | 0.04          | 1.28          | -170.85     | -15.26      |
| G051D   | 39  | 47.32 | 119  | 56.22 | 5748.0     | 979625.88  | 16.15       | -179.89     | 0.19          | 2.93          | -178.44     | -20.27      |
| G051S   | 39  | 48.91 | 119  | 39.75 | 4274.0     | 979727.75  | -22.85      | -168.62     | 0.01          | 0.93          | -169.00     | -12.61      |
| G052D   | 39  | 49.02 | 119  | 54.48 | 5758.0     | 979630.25  | 18.97       | -177.41     | 0.01          | 1.15          | -177.75     | -20.17      |
| G053S   | 39  | 50.00 | 119  | 38.89 | 4283.0     | 979736.12  | -15.31      | -161.39     | 0.06          | 1.59          | -161.11     | -5.19       |
| G10SS   | 39  | 37.74 | 119  | 43.13 | 4504.0     | 979690.12  | -22.37      | -175.98     | 0.01          | 0.72          | -176.61     | -16.68      |
| G11SS   | 39  | 38.62 | 119  | 42.47 | 4498.0     | 979692.62  | -21.73      | -175.14     | 0.01          | 0.72          | -175.77     | -16.13      |
| G12SS   | 39  | 39.50 | 119  | 42.28 | 4536.0     | 979693.50  | -18.57      | -173.28     | 0.01          | 0.72          | -173.91     | -14.54      |
| G13SS   | 39  | 40.66 | 119  | 41.97 | 4529.0     | 979693.25  | -21.15      | -175.62     | 0.01          | 0.90          | -176.07     | -17.13      |
| G14SS   | 39  | 41.63 | 119  | 41.85 | 4563.0     | 979692.88  | -19.79      | -175.42     | 0.02          | 1.13          | -175.64     | -16.96      |
| G15SS   | 39  | 42.70 | 119  | 41.83 | 4618.0     | 979692.12  | -17.00      | -174.50     | 0.04          | 1.65          | -174.21     | -15.84      |
| G16SS   | 39  | 43.55 | 119  | 41.41 | 4706.0     | 979691.25  | -10.80      | -171.30     | 0.02          | 1.32          | -171.35     | -13.36      |
| G17SS   | 39  | 44.45 | 119  | 41.25 | 4605.0     | 979694.50  | -18.42      | -175.48     | 0.12          | 1.93          | -174.91     | -17.12      |
| G20SS   | 39  | 43.61 | 119  | 44.69 | 4857.0     | 979669.25  | -18.69      | -184.35     | 0.02          | 0.83          | -184.91     | -26.53      |
| G21SS   | 39  | 44.22 | 119  | 44.28 | 4807.0     | 979675.25  | -18.29      | -182.24     | 0.03          | 0.90          | -182.73     | -24.50      |
| G22SS   | 39  | 44.90 | 119  | 43.86 | 4747.0     | 979687.62  | -12.63      | -174.54     | 0.05          | 1.05          | -174.86     | -16.86      |
| G30SS   | 39  | 38.18 | 119  | 41.68 | 4493.0     | 979693.50  | -20.66      | -173.90     | 0.01          | 0.77          | -174.47     | -14.85      |
| G31SS   | 39  | 40.80 | 119  | 40.59 | 4817.0     | 979679.19  | -8.39       | -172.68     | 0.07          | 0.94          | -173.13     | -14.54      |
| H1100   | 39  | 45.60 | 119  | 37.56 | 4420.0     | 979700.00  | -32.03      | -182.78     | 0.02          | 1.55          | -182.56     | -25.61      |
| H1457   | 39  | 44.40 | 119  | 48.60 | 5192.0     | 979658.88  | 1.20        | -175.89     | 0.02          | 0.83          | -176.49     | -17.90      |
| H1458   | 39  | 44.06 | 119  | 56.18 | 5771.0     | 979620.94  | 18.20       | -178.63     | 0.25          | 1.81          | -178.30     | -19.22      |
| H1462   | 39  | 43.97 | 119  | 59.53 | 6355.0     | 979584.12  | 36.43       | -180.31     | 0.42          | 4.25          | -177.57     | -18.64      |
| H6309   | 39  | 47.76 | 119  | 58.51 | 7850.0     | 979484.62  | 71.74       | -196.00     | 1.88          | 18.29         | -179.19     | -21.87      |
| H6310   | 39  | 51.31 | 119  | 59.38 | 7109.0     | 979526.50  | 38.72       | -203.74     | 4.11          | 19.82         | -185.44     | -28.85      |
| H6689   | 39  | 40.60 | 119  | 43.13 | 4576.0     | 979689.12  | -20.82      | -176.90     | 0.01          | 0.96          | -177.29     | -18.21      |
| H6696   | 39  | 39.10 | 119  | 59.57 | 5208.0     | 979642.81  | -5.51       | -183.13     | 0.05          | 1.26          | -183.31     | -22.52      |
| H6697   | 39  | 45.91 | 119  | 56.07 | 6006.0     | 979609.31  | 25.93       | -178.91     | 0.31          | 2.30          | -178.11     | -19.68      |
| LV001   | 39  | 39.21 | 119  | 52.47 | 5019.0     | 979662.19  | -4.02       | -175.21     | 0.01          | 0.72          | -175.90     | -15.40      |
| LV007   | 39  | 38.76 | 119  | 51.91 | 4971.0     | 979666.44  | -3.62       | -173.16     | 0.01          | 0.76          | -173.81     | -13.20      |
| LV011   | 39  | 38.48 | 119  | 51.64 | 4945.0     | 979667.00  | -5.12       | -173.78     | 0.01          | 0.81          | -174.37     | -13.70      |
| LV015   | 39  | 38.50 | 119  | 50.76 | 4940.0     | 979670.12  | -2.45       | -170.93     | 0.01          | 0.76          | -171.58     | -11.00      |
| LV019   | 39  | 39.39 | 119  | 51.83 | 4950.0     | 979670.00  | -3.01       | -171.83     | 0.01          | 0.70          | -172.54     | -12.12      |
| LV026   | 39  | 40.00 | 119  | 50.89 | 4918.0     | 979670.50  | -6.39       | -174.12     | 0.01          | 0.67          | -174.86     | -14.69      |
| LV030   | 39  | 40.21 | 119  | 51.18 | 4961.0     | 979667.88  | -5.25       | -174.45     | 0.03          | 0.66          | -175.20     | -15.09      |
| LV031   | 39  | 40.59 | 119  | 51.18 | 5018.0     | 979665.75  | -2.61       | -173.76     | 0.04          | 0.67          | -174.50     | -14.53      |
| LV033   | 39  | 40.76 | 119  | 50.77 | 4947.0     | 979667.75  | -7.56       | -176.28     | 0.02          | 0.75          | -176.94     | -17.03      |
| LV036   | 39  | 41.00 | 119  | 51.16 | 5080.0     | 979661.69  | -1.44       | -174.70     | 0.06          | 0.76          | -175.36     | -15.52      |
| LV038   | 39  | 41.50 | 119  | 51.44 | 5300.0     | 979649.06  | 5.83        | -174.93     | 0.10          | 0.91          | -175.46     | -15.79      |
| LV041   | 39  | 41.49 | 119  | 50.56 | 5116.0     | 979662.75  | 2.23        | -172.25     | 0.28          | 1.26          | -172.42     | -12.77      |
| LV046   | 39  | 40.95 | 119  | 50.29 | 4939.0     | 979670.69  | -5.63       | -174.08     | 0.01          | 0.75          | -174.74     | -14.92      |
| LV048   | 39  | 40.44 | 119  | 50.51 | 4923.0     | 979669.25  | -7.84       | -175.75     | 0.01          | 0.67          | -176.48     | -16.50      |
| LV050   | 39  | 40.53 | 119  | 49.91 | 4928.0     | 979670.00  | -6.70       | -174.78     | 0.01          | 0.64          | -175.54     | -15.63      |
| LV051   | 39  | 40.94 | 119  | 49.73 | 4945.0     | 979671.00  | -4.77       | -173.43     | 0.01          | 0.68          | -174.15     | -14.40      |

Table 2. Principal facts of gravity stations in the Antelope Valley–Bedell Flat area.— Continued

| Station | Lat |       | Long |       | Elev<br>ft | OG<br>mGal | FAA<br>mGal | SBA<br>mGal | TC            |               | CBA<br>mGal | ISO<br>mGal |
|---------|-----|-------|------|-------|------------|------------|-------------|-------------|---------------|---------------|-------------|-------------|
|         | deg | min   | deg  | min   |            |            |             |             | inner<br>mGal | total<br>mGal |             |             |
| LV052   | 39  | 41.26 | 119  | 49.73 | 4992.0     | 979670.00  | -1.83       | -172.09     | 0.01          | 0.73          | -172.77     | -13.12      |
| LV054   | 39  | 41.80 | 119  | 49.86 | 5085.0     | 979665.25  | 1.41        | -172.02     | 0.02          | 0.95          | -172.49     | -12.99      |
| LV057   | 39  | 42.31 | 119  | 49.75 | 5312.0     | 979652.00  | 8.69        | -172.48     | 0.32          | 1.21          | -172.72     | -13.46      |
| LV060   | 39  | 41.84 | 119  | 49.26 | 5180.0     | 979660.00  | 5.00        | -171.67     | 0.14          | 0.94          | -172.16     | -12.78      |
| LV061   | 39  | 40.17 | 119  | 49.87 | 4920.0     | 979669.88  | -7.05       | -174.86     | 0.01          | 0.62          | -175.64     | -15.64      |
| LV063   | 39  | 40.33 | 119  | 49.14 | 4933.0     | 979669.88  | -6.08       | -174.32     | 0.01          | 0.61          | -175.12     | -15.25      |
| LV064   | 39  | 40.34 | 119  | 48.75 | 4950.0     | 979670.19  | -4.20       | -173.03     | 0.01          | 0.63          | -173.81     | -14.00      |
| LV066   | 39  | 40.55 | 119  | 47.71 | 4996.0     | 979668.44  | -1.92       | -172.32     | 0.02          | 0.66          | -173.07     | -13.47      |
| LV070   | 39  | 39.87 | 119  | 49.72 | 4919.0     | 979670.00  | -6.59       | -174.36     | 0.01          | 0.62          | -175.14     | -15.06      |
| LV072   | 39  | 39.90 | 119  | 49.02 | 4931.0     | 979672.44  | -3.08       | -171.26     | 0.01          | 0.64          | -172.02     | -12.05      |
| LV077   | 39  | 39.46 | 119  | 49.64 | 4918.0     | 979671.25  | -4.81       | -172.54     | 0.01          | 0.66          | -173.29     | -13.10      |
| LV079   | 39  | 39.47 | 119  | 48.89 | 4953.0     | 979671.56  | -1.27       | -170.20     | 0.02          | 0.74          | -170.87     | -10.78      |
| LV082   | 39  | 38.84 | 119  | 49.31 | 5000.0     | 979668.56  | 1.09        | -169.45     | 0.25          | 1.03          | -169.83     | -9.53       |
| LV084   | 39  | 38.91 | 119  | 49.65 | 4921.0     | 979672.38  | -2.63       | -170.47     | 0.19          | 1.01          | -170.86     | -10.50      |
| LV088   | 39  | 38.62 | 119  | 50.04 | 4925.0     | 979671.44  | -2.73       | -170.70     | 0.01          | 0.83          | -171.27     | -10.79      |
| LV090   | 39  | 38.34 | 119  | 49.73 | 5022.0     | 979665.81  | 1.16        | -170.13     | 0.14          | 0.99          | -170.55     | -10.07      |
| LV094   | 39  | 37.99 | 119  | 51.77 | 4986.0     | 979664.94  | -2.60       | -172.65     | 0.01          | 0.89          | -173.17     | -12.37      |
| LV096   | 39  | 37.53 | 119  | 51.76 | 5024.0     | 979662.19  | -1.09       | -172.44     | 0.02          | 1.02          | -172.83     | -11.92      |
| LV099   | 39  | 37.75 | 119  | 50.69 | 4977.0     | 979666.81  | -1.20       | -170.95     | 0.07          | 1.00          | -171.36     | -10.60      |
| LV102   | 39  | 38.17 | 119  | 50.56 | 4951.0     | 979669.19  | -1.90       | -170.76     | 0.02          | 0.86          | -171.30     | -10.66      |
| LV106   | 39  | 37.87 | 119  | 52.69 | 5035.0     | 979659.38  | -3.39       | -175.11     | 0.01          | 1.07          | -175.46     | -14.58      |
| LV109   | 39  | 38.39 | 119  | 52.83 | 4985.0     | 979661.56  | -6.65       | -176.67     | 0.01          | 0.96          | -177.12     | -16.33      |
| LV112   | 39  | 38.87 | 119  | 52.85 | 4993.0     | 979661.12  | -7.06       | -177.35     | 0.01          | 0.83          | -177.93     | -17.26      |
| LV117   | 39  | 39.43 | 119  | 53.10 | 4988.0     | 979660.50  | -8.95       | -179.08     | 0.01          | 0.77          | -179.72     | -19.22      |
| LV119   | 39  | 38.93 | 119  | 53.22 | 4974.0     | 979659.69  | -10.37      | -180.02     | 0.01          | 0.89          | -180.53     | -19.85      |
| LV122   | 39  | 38.08 | 119  | 53.44 | 5030.0     | 979656.31  | -7.20       | -178.75     | 0.01          | 1.20          | -178.97     | -18.06      |
| LV125   | 39  | 38.39 | 119  | 53.59 | 4967.0     | 979656.19  | -13.71      | -183.11     | 0.01          | 1.17          | -183.35     | -22.49      |
| LV127   | 39  | 38.16 | 119  | 54.15 | 4971.0     | 979653.12  | -16.08      | -185.63     | 0.01          | 1.53          | -185.50     | -24.54      |
| LV132   | 39  | 37.76 | 119  | 54.88 | 5018.0     | 979651.19  | -12.96      | -184.11     | 0.02          | 2.58          | -182.94     | -21.85      |
| LV135   | 39  | 38.59 | 119  | 55.48 | 4970.0     | 979656.00  | -13.94      | -183.45     | 0.24          | 2.92          | -181.94     | -21.01      |
| LV137   | 39  | 39.15 | 119  | 55.35 | 4971.0     | 979656.38  | -14.25      | -183.79     | 0.03          | 1.80          | -183.40     | -22.66      |
| LV141   | 39  | 39.10 | 119  | 54.72 | 4968.0     | 979653.12  | -17.73      | -187.17     | 0.01          | 1.22          | -187.35     | -26.60      |
| LV143   | 39  | 39.56 | 119  | 54.72 | 4982.0     | 979654.75  | -15.50      | -185.42     | 0.01          | 1.07          | -185.76     | -25.15      |
| LV144   | 39  | 39.50 | 119  | 54.25 | 4977.0     | 979654.56  | -16.02      | -185.77     | 0.01          | 0.95          | -186.23     | -25.62      |
| LV145   | 39  | 39.11 | 119  | 54.25 | 4970.0     | 979653.25  | -17.46      | -186.97     | 0.01          | 1.06          | -187.32     | -26.60      |
| LV146   | 39  | 40.65 | 119  | 51.52 | 5081.0     | 979660.00  | -2.55       | -175.85     | 0.02          | 0.63          | -176.64     | -16.66      |
| LV148   | 39  | 41.04 | 119  | 51.90 | 5123.0     | 979656.06  | -3.12       | -177.85     | 0.02          | 0.65          | -178.62     | -18.72      |
| LV150   | 39  | 41.41 | 119  | 52.36 | 5083.0     | 979656.31  | -7.17       | -180.53     | 0.02          | 0.70          | -181.25     | -21.41      |
| LV152   | 39  | 41.89 | 119  | 52.36 | 5109.0     | 979657.00  | -4.77       | -179.02     | 0.03          | 0.74          | -179.70     | -19.99      |
| LV155   | 39  | 42.49 | 119  | 52.41 | 5105.0     | 979659.25  | -3.76       | -177.88     | 0.02          | 0.80          | -178.50     | -18.95      |
| LV158   | 39  | 43.18 | 119  | 51.98 | 5131.0     | 979660.38  | -1.23       | -176.23     | 0.02          | 0.88          | -176.78     | -17.51      |
| LV159   | 39  | 43.57 | 119  | 52.01 | 5140.0     | 979658.62  | -2.66       | -177.97     | 0.01          | 0.88          | -178.52     | -19.34      |
| LV160   | 39  | 43.22 | 119  | 52.60 | 5152.0     | 979654.00  | -5.70       | -181.41     | 0.02          | 0.79          | -182.05     | -22.74      |
| LV161   | 39  | 43.14 | 119  | 53.07 | 5154.0     | 979651.19  | -8.19       | -183.97     | 0.05          | 0.85          | -184.55     | -25.18      |
| LV164   | 39  | 42.50 | 119  | 54.15 | 5262.0     | 979644.75  | -3.54       | -183.01     | 0.07          | 0.87          | -183.58     | -23.96      |
| LV166   | 39  | 42.01 | 119  | 54.45 | 5132.0     | 979652.31  | -7.46       | -182.50     | 0.03          | 0.87          | -183.05     | -23.22      |
| LV169   | 39  | 41.64 | 119  | 54.16 | 5072.0     | 979654.25  | -10.62      | -183.61     | 0.02          | 0.81          | -184.22     | -24.29      |
| LV170   | 39  | 41.66 | 119  | 53.59 | 5037.0     | 979655.31  | -12.84      | -184.64     | 0.01          | 0.78          | -185.27     | -25.36      |
| LV171   | 39  | 41.66 | 119  | 52.94 | 5041.0     | 979656.12  | -11.64      | -183.57     | 0.01          | 0.74          | -184.24     | -24.39      |
| LV173   | 39  | 41.19 | 119  | 55.04 | 5189.0     | 979650.44  | -2.75       | -179.73     | 0.04          | 0.83          | -180.33     | -20.27      |
| LV174   | 39  | 41.25 | 119  | 54.14 | 5051.0     | 979655.25  | -11.01      | -183.28     | 0.01          | 0.78          | -183.92     | -23.88      |
| LV175   | 39  | 41.25 | 119  | 54.58 | 5142.0     | 979651.12  | -6.59       | -181.96     | 0.05          | 0.79          | -182.60     | -22.56      |
| LV176   | 39  | 40.78 | 119  | 55.26 | 5177.0     | 979651.44  | -2.28       | -178.85     | 0.03          | 0.86          | -179.42     | -19.26      |
| LV178   | 39  | 40.23 | 119  | 55.20 | 5157.0     | 979648.38  | -6.37       | -182.25     | 0.06          | 0.95          | -182.73     | -22.38      |
| LV179   | 39  | 39.92 | 119  | 55.28 | 5080.0     | 979652.00  | -9.56       | -182.82     | 0.03          | 1.07          | -183.17     | -22.69      |
| LV181   | 39  | 40.33 | 119  | 51.89 | 5070.0     | 979659.88  | -3.19       | -176.11     | 0.01          | 0.61          | -176.92     | -16.81      |
| LV185   | 39  | 42.07 | 119  | 53.84 | 5098.0     | 979652.69  | -10.35      | -184.22     | 0.03          | 0.80          | -184.84     | -25.07      |
| LV187   | 39  | 42.06 | 119  | 53.26 | 5055.0     | 979655.81  | -11.23      | -183.64     | 0.01          | 0.77          | -184.29     | -24.53      |
| LV189   | 39  | 42.06 | 119  | 52.69 | 5065.0     | 979657.50  | -8.61       | -181.36     | 0.01          | 0.77          | -182.01     | -22.30      |

Table 2. Principal facts of gravity stations in the Antelope Valley–Bedell Flat area.— Continued

| Station | Lat |       | Long |       | Elev<br>ft | OG<br>mGal | FAA<br>mGal | SBA<br>mGal | TC            |               | CBA<br>mGal | ISO<br>mGal |
|---------|-----|-------|------|-------|------------|------------|-------------|-------------|---------------|---------------|-------------|-------------|
|         | deg | min   | deg  | min   |            |            |             |             | inner<br>mGal | total<br>mGal |             |             |
| LV191   | 39  | 42.13 | 119  | 51.11 | 5590.0     | 979634.00  | 17.12       | -173.54     | 0.26          | 1.59          | -173.42     | -14.05      |
| LV194   | 39  | 44.19 | 119  | 51.27 | 5223.0     | 979656.94  | 2.49        | -175.65     | 0.06          | 1.03          | -176.05     | -17.15      |
| LV195   | 39  | 44.52 | 119  | 50.51 | 5426.0     | 979648.94  | 13.10       | -171.96     | 0.09          | 0.99          | -172.43     | -13.75      |
| LV196   | 39  | 42.11 | 119  | 55.11 | 5200.0     | 979653.38  | -0.16       | -177.51     | 0.27          | 1.21          | -177.74     | -17.94      |
| LV197   | 39  | 41.64 | 119  | 55.65 | 5390.0     | 979641.75  | 6.83        | -177.01     | 0.07          | 0.96          | -177.50     | -17.61      |
| LV198   | 39  | 39.91 | 119  | 54.57 | 5011.0     | 979654.38  | -13.65      | -184.56     | 0.02          | 0.93          | -185.04     | -24.56      |
| LV199   | 39  | 39.90 | 119  | 54.16 | 4982.0     | 979655.69  | -15.01      | -184.93     | 0.01          | 0.87          | -185.47     | -25.00      |
| LV202   | 39  | 40.67 | 119  | 54.29 | 5031.0     | 979655.50  | -11.78      | -183.37     | 0.02          | 0.81          | -183.97     | -23.77      |
| LV204   | 39  | 40.26 | 119  | 54.56 | 5050.0     | 979653.38  | -11.46      | -183.69     | 0.03          | 0.86          | -184.25     | -23.90      |
| LV209   | 39  | 40.90 | 119  | 56.19 | 5368.0     | 979643.44  | 7.52        | -175.56     | 0.09          | 0.98          | -176.03     | -15.90      |
| LV210   | 39  | 41.21 | 119  | 56.65 | 5494.0     | 979636.19  | 11.66       | -175.72     | 0.25          | 1.29          | -175.90     | -15.89      |
| LV213   | 39  | 39.56 | 119  | 55.77 | 5150.0     | 979649.81  | -4.61       | -180.26     | 0.06          | 1.51          | -180.18     | -19.60      |
| LV214   | 39  | 39.90 | 119  | 53.70 | 4985.0     | 979656.31  | -14.13      | -184.15     | 0.01          | 0.79          | -184.77     | -24.33      |
| LV215   | 39  | 40.63 | 119  | 53.31 | 5001.0     | 979657.12  | -12.86      | -183.43     | 0.01          | 0.71          | -184.13     | -23.99      |
| LV216   | 39  | 41.11 | 119  | 53.28 | 5016.0     | 979656.81  | -12.50      | -183.58     | 0.01          | 0.72          | -184.27     | -24.24      |
| LV220   | 39  | 39.73 | 119  | 51.83 | 5047.0     | 979663.38  | -1.01       | -173.15     | 0.04          | 0.66          | -173.91     | -13.61      |
| LV221   | 39  | 40.32 | 119  | 52.65 | 5026.0     | 979657.69  | -9.53       | -180.95     | 0.01          | 0.65          | -181.71     | -21.53      |
| LV222   | 39  | 40.85 | 119  | 52.74 | 5035.0     | 979656.88  | -10.26      | -181.99     | 0.01          | 0.67          | -182.73     | -22.70      |
| LV223   | 39  | 39.78 | 119  | 52.58 | 5021.0     | 979660.62  | -6.26       | -177.51     | 0.01          | 0.67          | -178.25     | -17.87      |
| LV224   | 39  | 39.84 | 119  | 53.03 | 5001.0     | 979659.25  | -9.58       | -180.15     | 0.01          | 0.71          | -180.85     | -20.48      |
| LV229   | 39  | 37.79 | 119  | 49.33 | 5270.0     | 979648.75  | 8.19        | -171.55     | 0.09          | 0.86          | -172.13     | -11.66      |
| LV231   | 39  | 37.55 | 119  | 53.57 | 5130.0     | 979650.50  | -2.81       | -177.78     | 0.03          | 1.55          | -177.66     | -16.64      |
| LV234   | 39  | 42.23 | 119  | 48.01 | 5555.0     | 979635.31  | 15.00       | -174.46     | 0.39          | 1.58          | -174.35     | -15.30      |
| Q 898   | 39  | 42.51 | 119  | 47.35 | 5268.0     | 979651.88  | 4.18        | -175.49     | 0.09          | 0.85          | -176.08     | -17.14      |
| Q 899   | 39  | 38.89 | 119  | 47.59 | 5248.0     | 979653.31  | 9.08        | -169.91     | 0.08          | 0.89          | -170.46     | -10.46      |
| X6456   | 39  | 54.91 | 119  | 39.92 | 6566.0     | 979595.69  | 51.56       | -172.39     | 2.48          | 13.05         | -160.85     | -6.83       |
| X6457   | 39  | 55.94 | 119  | 43.43 | 6194.0     | 979630.69  | 50.09       | -161.17     | 0.68          | 5.55          | -157.12     | -2.83       |
| X6458   | 39  | 58.72 | 119  | 41.19 | 7443.0     | 979541.31  | 73.94       | -179.92     | 1.29          | 16.25         | -165.17     | -12.33      |
| X6459   | 39  | 58.56 | 119  | 44.59 | 8722.0     | 979455.31  | 108.37      | -189.11     | 1.31          | 27.04         | -163.47     | -10.56      |
| X6460   | 39  | 50.19 | 119  | 44.04 | 5225.0     | 979674.44  | 11.30       | -166.90     | 1.41          | 4.40          | -163.94     | -7.59       |
| 930172  | 39  | 37.91 | 119  | 56.70 | 5423.0     | 979630.88  | 4.56        | -180.40     | 0.22          | 2.83          | -179.02     | -18.03      |
| H1099   | 39  | 41.52 | 119  | 39.25 | 5591.0     | 979630.25  | 14.39       | -176.30     | 1.16          | 3.28          | -174.49     | -16.51      |
| H1106   | 39  | 39.87 | 119  | 57.46 | 5274.0     | 979644.88  | 1.67        | -178.20     | 0.91          | 2.01          | -177.63     | -17.12      |

## Data from Carpenter (written commun, 1998)

|    |    |       |     |       |        |           |       |         |      |      |         |        |
|----|----|-------|-----|-------|--------|-----------|-------|---------|------|------|---------|--------|
| 1  | 39 | 44.64 | 119 | 50.18 | 5302.4 | 979653.88 | 6.21  | -174.63 | 0.21 | 1.20 | -174.87 | -16.21 |
| 2  | 39 | 44.74 | 119 | 49.95 | 5180.6 | 979659.75 | 0.49  | -176.20 | 0.14 | 1.32 | -176.31 | -17.66 |
| 3  | 39 | 44.89 | 119 | 49.74 | 5124.1 | 979662.88 | -1.90 | -176.67 | 0.07 | 1.28 | -176.81 | -18.21 |
| 4  | 39 | 44.71 | 119 | 49.57 | 5122.9 | 979663.38 | -1.26 | -175.98 | 0.02 | 1.10 | -176.30 | -17.67 |
| 5  | 39 | 44.51 | 119 | 49.50 | 5150.7 | 979661.00 | -0.67 | -176.34 | 0.06 | 1.09 | -176.67 | -18.00 |
| 6  | 39 | 44.30 | 119 | 49.53 | 5213.5 | 979657.25 | 1.78  | -176.03 | 0.14 | 1.13 | -176.33 | -17.63 |
| 7  | 39 | 44.09 | 119 | 49.57 | 5270.9 | 979652.88 | 3.12  | -176.65 | 0.25 | 1.24 | -176.84 | -18.12 |
| 8  | 39 | 43.86 | 119 | 49.69 | 5366.0 | 979647.38 | 6.87  | -176.15 | 0.52 | 1.47 | -176.12 | -17.35 |
| 9  | 39 | 43.66 | 119 | 49.70 | 5455.2 | 979641.62 | 9.79  | -176.27 | 0.34 | 1.23 | -176.49 | -17.71 |
| 10 | 39 | 44.77 | 119 | 49.19 | 5125.2 | 979664.12 | -0.35 | -175.15 | 0.01 | 0.91 | -175.66 | -17.10 |
| 11 | 39 | 44.20 | 119 | 49.11 | 5196.9 | 979658.12 | 1.24  | -176.01 | 0.07 | 1.03 | -176.40 | -17.70 |
| 12 | 39 | 44.41 | 119 | 48.57 | 5192.5 | 979658.50 | 0.91  | -176.19 | 0.03 | 0.83 | -176.79 | -18.21 |
| 13 | 39 | 44.54 | 119 | 48.30 | 5261.0 | 979655.38 | 3.96  | -175.47 | 0.08 | 0.82 | -176.08 | -17.58 |
| 14 | 39 | 44.56 | 119 | 48.04 | 5350.6 | 979650.50 | 7.52  | -174.96 | 0.21 | 0.98 | -175.43 | -17.01 |
| 15 | 39 | 44.43 | 119 | 47.66 | 5514.8 | 979640.44 | 13.10 | -174.99 | 0.10 | 1.06 | -175.38 | -17.01 |
| 16 | 39 | 44.66 | 119 | 48.46 | 5210.9 | 979658.44 | 2.19  | -175.54 | 0.05 | 0.82 | -176.14 | -17.64 |
| 17 | 39 | 45.00 | 119 | 48.46 | 5228.4 | 979658.25 | 3.12  | -175.20 | 0.06 | 0.84 | -175.79 | -17.39 |
| 18 | 39 | 45.23 | 119 | 49.36 | 5113.8 | 979664.56 | -1.68 | -176.09 | 0.00 | 1.04 | -176.47 | -18.03 |
| 19 | 39 | 45.66 | 119 | 49.31 | 5113.9 | 979665.38 | -1.47 | -175.89 | 0.00 | 1.13 | -176.18 | -17.84 |
| 20 | 39 | 45.91 | 119 | 49.45 | 5124.3 | 979665.62 | -0.60 | -175.37 | 0.01 | 1.34 | -175.45 | -17.18 |
| 21 | 39 | 45.70 | 119 | 49.60 | 5128.8 | 979664.25 | -1.26 | -176.19 | 0.05 | 1.45 | -176.16 | -17.80 |
| 22 | 39 | 46.00 | 119 | 49.69 | 5144.0 | 979665.50 | 0.98  | -174.46 | 0.12 | 1.85 | -174.03 | -15.76 |
| 23 | 39 | 46.11 | 119 | 49.23 | 5136.9 | 979666.50 | 1.13  | -174.07 | 0.00 | 1.15 | -174.34 | -16.15 |

Table 2. Principal facts of gravity stations in the Antelope Valley–Bedell Flat area.— Continued

| Station | Lat |       | Long |       | Elev<br>ft | OG<br>mGal | FAA<br>mGal | SBA<br>mGal | TC            |               | CBA<br>mGal | ISO<br>mGal |
|---------|-----|-------|------|-------|------------|------------|-------------|-------------|---------------|---------------|-------------|-------------|
|         | deg | min   | deg  | min   |            |            |             |             | inner<br>mGal | total<br>mGal |             |             |
| 24      | 39  | 46.13 | 119  | 48.77 | 5150.8     | 979666.88  | 2.82        | -172.86     | 0.00          | 0.92          | -173.36     | -15.23      |
| 25      | 39  | 46.23 | 119  | 48.47 | 5162.8     | 979666.56  | 3.45        | -172.64     | 0.03          | 0.91          | -173.15     | -15.10      |
| 26      | 39  | 46.23 | 119  | 48.20 | 5252.7     | 979661.94  | 7.30        | -171.85     | 0.13          | 0.94          | -172.35     | -14.36      |
| 27      | 39  | 46.25 | 119  | 47.85 | 5381.2     | 979655.12  | 12.51       | -171.02     | 0.10          | 0.94          | -171.52     | -13.63      |
| 28      | 39  | 46.48 | 119  | 48.76 | 5193.5     | 979665.56  | 4.95        | -172.18     | 0.04          | 0.92          | -172.69     | -14.69      |
| 29      | 39  | 46.64 | 119  | 48.53 | 5200.8     | 979665.62  | 5.45        | -171.93     | 0.02          | 0.83          | -172.52     | -14.60      |
| 30      | 39  | 46.66 | 119  | 48.25 | 5190.1     | 979665.75  | 4.55        | -172.47     | 0.01          | 0.83          | -173.07     | -15.19      |
| 31      | 39  | 46.66 | 119  | 47.59 | 5278.7     | 979662.31  | 9.46        | -170.57     | 0.06          | 0.90          | -171.11     | -13.32      |
| 32      | 39  | 46.67 | 119  | 47.91 | 5223.8     | 979664.94  | 6.90        | -171.27     | 0.03          | 0.85          | -171.84     | -14.01      |
| 33      | 39  | 45.75 | 119  | 48.75 | 5145.7     | 979665.50  | 1.50        | -174.00     | 0.01          | 0.91          | -174.52     | -16.28      |
| 34      | 39  | 45.44 | 119  | 48.59 | 5165.2     | 979664.12  | 2.42        | -173.74     | 0.03          | 0.90          | -174.27     | -15.95      |
| 35      | 39  | 46.64 | 119  | 48.91 | 5204.7     | 979665.12  | 5.36        | -172.15     | 0.08          | 1.01          | -172.57     | -14.62      |
| 36      | 39  | 46.65 | 119  | 49.18 | 5142.8     | 979667.44  | 1.85        | -173.56     | 0.01          | 1.26          | -173.72     | -15.73      |
| 37      | 39  | 46.65 | 119  | 49.46 | 5176.2     | 979663.44  | 0.96        | -175.58     | 0.02          | 1.57          | -175.43     | -17.42      |
| 38      | 39  | 46.64 | 119  | 49.73 | 5225.5     | 979660.44  | 2.61        | -175.61     | 0.07          | 2.11          | -174.93     | -16.90      |
| 39      | 39  | 46.45 | 119  | 49.93 | 5273.7     | 979657.38  | 4.33        | -175.53     | 0.15          | 2.60          | -174.36     | -16.25      |
| 40      | 39  | 46.17 | 119  | 49.74 | 5176.2     | 979664.00  | 2.24        | -174.30     | 0.10          | 1.99          | -173.74     | -15.55      |
| 41      | 39  | 46.18 | 119  | 49.52 | 5138.9     | 979666.00  | 0.74        | -174.53     | 0.02          | 1.56          | -174.39     | -16.20      |
| 42      | 39  | 46.46 | 119  | 49.31 | 5146.0     | 979666.00  | 0.94        | -174.57     | 0.01          | 1.34          | -174.65     | -16.55      |
| 43      | 39  | 47.00 | 119  | 49.32 | 5175.2     | 979664.62  | 1.56        | -174.94     | 0.02          | 1.45          | -174.92     | -17.01      |
| 44      | 39  | 47.24 | 119  | 49.32 | 5197.4     | 979664.50  | 3.15        | -174.11     | 0.04          | 1.50          | -174.04     | -16.19      |
| 45      | 39  | 47.48 | 119  | 49.32 | 5251.5     | 979662.38  | 5.75        | -173.36     | 0.39          | 1.80          | -172.99     | -15.22      |
| 46      | 39  | 47.31 | 119  | 49.61 | 5263.9     | 979660.19  | 4.96        | -174.57     | 0.10          | 1.98          | -174.02     | -16.18      |
| 47      | 39  | 47.47 | 119  | 49.76 | 5351.3     | 979655.25  | 8.01        | -174.51     | 0.21          | 2.31          | -173.64     | -15.85      |
| 48      | 39  | 47.57 | 119  | 50.08 | 5574.7     | 979641.12  | 14.71       | -175.42     | 1.54          | 3.97          | -172.91     | -15.18      |
| 49      | 39  | 47.92 | 119  | 49.83 | 5573.1     | 979644.06  | 17.02       | -173.05     | 0.23          | 1.89          | -172.63     | -15.02      |
| 50      | 39  | 48.33 | 119  | 49.70 | 5517.9     | 979649.56  | 16.70       | -171.50     | 0.11          | 1.35          | -171.60     | -14.09      |
| 51      | 39  | 48.70 | 119  | 49.89 | 5405.0     | 979656.31  | 12.32       | -172.03     | 0.28          | 1.53          | -171.94     | -14.49      |
| 52      | 39  | 48.97 | 119  | 50.05 | 5317.8     | 979660.75  | 8.12        | -173.25     | 0.14          | 1.32          | -173.36     | -15.97      |
| 53      | 39  | 49.26 | 119  | 50.13 | 5223.3     | 979662.06  | 0.15        | -178.00     | 0.06          | 1.12          | -178.31     | -20.95      |
| 54      | 39  | 49.70 | 119  | 50.21 | 5124.8     | 979664.81  | -7.03       | -181.82     | 0.01          | 0.94          | -182.29     | -25.04      |
| 55      | 39  | 50.10 | 119  | 50.34 | 5103.4     | 979666.12  | -8.30       | -182.36     | 0.01          | 0.87          | -182.91     | -25.72      |
| 56      | 39  | 49.56 | 119  | 48.46 | 5272.1     | 979665.69  | 7.93        | -171.88     | 0.02          | 0.81          | -172.50     | -15.44      |
| 57      | 39  | 49.15 | 119  | 48.39 | 5293.1     | 979663.25  | 8.08        | -172.44     | 0.03          | 0.83          | -173.05     | -15.88      |
| 58      | 39  | 48.71 | 119  | 48.34 | 5325.0     | 979660.38  | 8.85        | -172.77     | 0.03          | 0.84          | -173.37     | -16.06      |
| 59      | 39  | 48.30 | 119  | 48.43 | 5271.1     | 979663.25  | 7.24        | -172.54     | 0.17          | 1.09          | -172.89     | -15.43      |
| 60      | 39  | 48.27 | 119  | 47.64 | 5266.0     | 979662.62  | 6.21        | -173.39     | 0.06          | 0.89          | -173.94     | -16.57      |
| 61      | 39  | 47.91 | 119  | 47.81 | 5240.3     | 979663.50  | 5.20        | -173.53     | 0.01          | 0.88          | -174.08     | -16.58      |
| 62      | 39  | 47.88 | 119  | 48.52 | 5212.6     | 979666.12  | 5.27        | -172.51     | 0.03          | 1.00          | -172.94     | -15.35      |
| 63      | 39  | 47.50 | 119  | 48.76 | 5157.3     | 979668.38  | 2.85        | -173.05     | 0.02          | 1.11          | -173.36     | -15.62      |
| 64      | 39  | 47.07 | 119  | 48.76 | 5148.8     | 979668.75  | 3.10        | -172.51     | 0.01          | 1.02          | -172.91     | -15.04      |
| 65      | 39  | 50.14 | 119  | 50.72 | 5128.6     | 979664.56  | -7.56       | -182.48     | 0.01          | 0.90          | -183.01     | -25.83      |
| 66      | 39  | 49.87 | 119  | 51.11 | 5177.2     | 979661.44  | -5.74       | -182.31     | 0.06          | 1.04          | -182.70     | -25.44      |
| 67      | 39  | 49.56 | 119  | 51.38 | 5224.0     | 979657.69  | -4.63       | -182.80     | 0.09          | 1.14          | -183.09     | -25.72      |
| 68      | 39  | 49.66 | 119  | 51.63 | 5307.7     | 979653.31  | -1.29       | -182.32     | 0.16          | 1.07          | -182.68     | -25.32      |
| 69      | 39  | 49.65 | 119  | 51.93 | 5392.4     | 979649.50  | 2.90        | -181.02     | 0.09          | 0.97          | -181.50     | -24.18      |
| 70      | 39  | 49.25 | 119  | 51.74 | 5262.0     | 979654.88  | -3.39       | -182.85     | 0.05          | 1.24          | -183.05     | -25.57      |
| 71      | 39  | 49.02 | 119  | 52.20 | 5327.7     | 979650.88  | -0.90       | -182.61     | 0.03          | 1.18          | -182.87     | -25.30      |
| 72      | 39  | 48.71 | 119  | 52.70 | 5371.0     | 979649.19  | 1.95        | -181.24     | 0.13          | 1.35          | -181.33     | -23.63      |
| 73      | 39  | 48.43 | 119  | 53.12 | 5423.1     | 979648.31  | 6.39        | -178.57     | 0.09          | 1.30          | -178.72     | -20.94      |
| 74      | 39  | 48.18 | 119  | 53.54 | 5493.8     | 979644.50  | 9.58        | -177.80     | 0.17          | 1.40          | -177.85     | -19.98      |
| 75      | 39  | 48.02 | 119  | 54.15 | 5669.8     | 979633.62  | 15.53       | -177.84     | 0.15          | 1.31          | -178.00     | -20.10      |
| 76      | 39  | 48.82 | 119  | 53.31 | 5529.0     | 979642.56  | 10.04       | -178.53     | 0.07          | 1.06          | -178.93     | -21.29      |
| 77      | 39  | 49.07 | 119  | 53.59 | 5708.8     | 979632.38  | 16.38       | -178.32     | 0.11          | 1.14          | -178.66     | -21.13      |
| 101     | 39  | 50.55 | 119  | 49.92 | 5053.3     | 979673.75  | -6.08       | -178.43     | 0.00          | 0.82          | -179.02     | -21.99      |
| 103     | 39  | 51.04 | 119  | 49.02 | 5064.3     | 979677.38  | -2.16       | -174.89     | 0.01          | 0.91          | -175.39     | -18.61      |
| 104     | 39  | 51.35 | 119  | 48.62 | 5127.8     | 979674.31  | 0.33        | -174.56     | 0.03          | 1.08          | -174.91     | -18.27      |
| 105     | 39  | 51.68 | 119  | 48.27 | 5290.7     | 979666.69  | 7.50        | -172.95     | 0.09          | 1.37          | -173.02     | -16.56      |
| 106     | 39  | 52.01 | 119  | 47.91 | 5496.3     | 979656.12  | 15.78       | -171.68     | 0.13          | 1.91          | -171.23     | -14.99      |



Table 2. Principal facts of gravity stations in the Antelope Valley–Bedell Flat area.— Continued

| Station   | Lat |       | Long |       | Elev<br>ft | OG<br>mGal | FAA<br>mGal | SBA<br>mGal | TC            |               | CBA<br>mGal | ISO<br>mGal |
|-----------|-----|-------|------|-------|------------|------------|-------------|-------------|---------------|---------------|-------------|-------------|
|           | deg | min   | deg  | min   |            |            |             |             | inner<br>mGal | total<br>mGal |             |             |
| 107       | 39  | 52.34 | 119  | 47.68 | 5701.1     | 979645.62  | 24.03       | -170.41     | 0.14          | 2.60          | -169.28     | -13.26      |
| 108       | 39  | 52.63 | 119  | 47.47 | 5816.7     | 979641.38  | 30.20       | -168.18     | 1.56          | 4.92          | -164.74     | -8.85       |
| 109       | 39  | 52.03 | 119  | 47.45 | 5605.3     | 979651.31  | 21.21       | -169.97     | 0.18          | 2.35          | -169.09     | -12.95      |
| 110       | 39  | 51.68 | 119  | 47.12 | 5590.7     | 979652.50  | 21.51       | -169.17     | 0.18          | 2.24          | -168.39     | -12.18      |
| 111       | 39  | 51.33 | 119  | 46.80 | 5564.0     | 979654.06  | 21.08       | -168.68     | 0.15          | 2.12          | -168.03     | -11.73      |
| 112       | 39  | 51.72 | 119  | 46.66 | 5828.7     | 979638.31  | 29.65       | -169.14     | 0.66          | 3.71          | -166.91     | -10.83      |
| 113       | 39  | 50.96 | 119  | 47.03 | 5461.4     | 979658.38  | 16.32       | -169.95     | 0.20          | 1.60          | -169.80     | -13.33      |
| 114       | 39  | 50.82 | 119  | 47.45 | 5252.0     | 979669.50  | 7.95        | -171.17     | 0.07          | 1.17          | -171.43     | -14.80      |
| 115       | 39  | 50.90 | 119  | 47.92 | 5176.2     | 979673.38  | 4.56        | -171.98     | 0.03          | 1.10          | -172.31     | -15.64      |
| 116       | 39  | 50.56 | 119  | 48.28 | 5152.2     | 979675.12  | 4.58        | -171.14     | 0.07          | 1.00          | -171.56     | -14.73      |
| 117       | 39  | 51.07 | 119  | 48.44 | 5129.7     | 979674.62  | 1.19        | -173.77     | 0.02          | 0.99          | -174.19     | -17.49      |
| 118       | 39  | 51.28 | 119  | 48.94 | 5074.7     | 979676.88  | -2.00       | -175.08     | 0.01          | 0.99          | -175.50     | -18.79      |
| 119       | 39  | 51.53 | 119  | 49.40 | 5016.9     | 979678.75  | -5.97       | -177.07     | 0.01          | 1.05          | -177.43     | -20.73      |
| 120       | 39  | 51.72 | 119  | 49.90 | 4992.6     | 979678.00  | -9.23       | -179.51     | 0.00          | 1.04          | -179.87     | -23.16      |
| 121       | 39  | 51.93 | 119  | 50.41 | 4974.5     | 979677.12  | -12.15      | -181.82     | 0.00          | 1.09          | -182.13     | -25.45      |
| 122       | 39  | 52.24 | 119  | 50.55 | 4972.4     | 979677.38  | -12.53      | -182.12     | 0.01          | 1.19          | -182.34     | -25.74      |
| 123       | 39  | 52.60 | 119  | 50.24 | 5041.5     | 979675.75  | -8.23       | -180.18     | 0.05          | 1.35          | -180.24     | -23.81      |
| 124       | 39  | 52.98 | 119  | 49.99 | 5151.0     | 979673.62  | -0.62       | -176.30     | 0.12          | 1.70          | -176.02     | -19.76      |
| 125       | 39  | 53.38 | 119  | 49.77 | 5300.4     | 979668.06  | 7.28        | -173.50     | 0.15          | 2.22          | -172.72     | -16.65      |
| 126       | 39  | 53.75 | 119  | 49.45 | 5495.6     | 979659.38  | 16.37       | -171.06     | 0.73          | 3.67          | -168.85     | -12.99      |
| 127       | 39  | 53.57 | 119  | 50.23 | 5380.8     | 979662.88  | 9.37        | -174.15     | 0.13          | 1.90          | -173.69     | -17.65      |
| 128       | 39  | 53.69 | 119  | 50.76 | 5349.0     | 979663.75  | 7.06        | -175.37     | 0.11          | 1.80          | -175.01     | -18.94      |
| 129       | 39  | 53.60 | 119  | 51.37 | 5172.0     | 979671.00  | -2.17       | -178.57     | 0.11          | 1.67          | -178.32     | -22.11      |
| 130       | 39  | 53.64 | 119  | 51.93 | 5038.1     | 979678.12  | -7.72       | -179.55     | 0.05          | 1.59          | -179.37     | -23.09      |
| 131       | 39  | 53.77 | 119  | 52.43 | 4962.6     | 979684.81  | -8.30       | -177.56     | 0.06          | 1.60          | -177.36     | -21.08      |
| 132       | 39  | 54.10 | 119  | 52.38 | 5090.6     | 979676.62  | -4.93       | -178.55     | 0.75          | 2.39          | -177.57     | -21.42      |
| 133       | 39  | 54.07 | 119  | 52.92 | 4887.6     | 979690.38  | -10.21      | -176.90     | 0.08          | 1.81          | -176.49     | -20.22      |
| 134       | 39  | 54.07 | 119  | 53.58 | 4820.0     | 979690.19  | -16.75      | -181.14     | 0.03          | 1.53          | -181.00     | -24.66      |
| 135       | 39  | 53.79 | 119  | 53.40 | 4829.4     | 979687.44  | -18.21      | -182.92     | 0.03          | 1.63          | -182.68     | -26.25      |
| 136       | 39  | 53.43 | 119  | 52.99 | 4855.2     | 979683.75  | -18.94      | -184.53     | 0.08          | 1.90          | -184.03     | -27.55      |
| 137       | 39  | 53.08 | 119  | 52.67 | 4871.1     | 979681.69  | -18.98      | -185.11     | 0.23          | 2.30          | -184.20     | -27.67      |
| 138       | 39  | 52.78 | 119  | 53.07 | 5176.1     | 979667.06  | -4.52       | -181.05     | 1.72          | 3.24          | -179.24     | -22.69      |
| 139       | 39  | 52.70 | 119  | 52.06 | 4910.2     | 979680.25  | -16.22      | -183.69     | 0.08          | 1.91          | -183.17     | -26.58      |
| 140       | 39  | 52.98 | 119  | 51.94 | 4940.8     | 979678.25  | -15.77      | -184.28     | 0.03          | 1.47          | -184.21     | -27.71      |
| 141       | 39  | 52.41 | 119  | 51.62 | 4923.5     | 979679.62  | -15.18      | -183.10     | 0.04          | 1.68          | -182.82     | -26.19      |
| 142       | 39  | 52.16 | 119  | 51.14 | 4946.2     | 979677.81  | -14.45      | -183.14     | 0.02          | 1.33          | -183.21     | -26.51      |
| 143       | 39  | 51.88 | 119  | 50.78 | 4982.5     | 979675.75  | -12.71      | -182.64     | 0.01          | 1.11          | -182.93     | -26.18      |
| 144       | 39  | 51.45 | 119  | 50.70 | 5024.1     | 979673.50  | -10.42      | -181.77     | 0.01          | 1.00          | -182.18     | -25.32      |
| 145       | 39  | 51.02 | 119  | 50.63 | 5064.4     | 979670.81  | -8.67       | -181.40     | 0.01          | 0.91          | -181.90     | -24.94      |
| 1003      | 39  | 44.89 | 119  | 49.74 | 5124.0     | 979662.88  | -1.92       | -176.68     | 0.07          | 1.28          | -176.82     | -18.22      |
| 1028      | 39  | 46.48 | 119  | 48.76 | 5193.7     | 979665.56  | 4.96        | -172.18     | 0.04          | 0.92          | -172.69     | -14.69      |
| 1067      | 39  | 49.56 | 119  | 51.38 | 5224.0     | 979657.62  | -4.65       | -182.82     | 0.09          | 1.14          | -183.11     | -25.74      |
| 4444      | 39  | 44.59 | 119  | 50.45 | 5415.7     | 979647.88  | 10.94       | -173.77     | 0.12          | 1.03          | -174.19     | -15.53      |
| 5555      | 39  | 50.45 | 119  | 50.49 | 5087.5     | 979667.88  | -8.55       | -182.06     | 0.01          | 0.86          | -182.61     | -25.50      |
| USGS data |     |       |      |       |            |            |             |             |               |               |             |             |
| OOREN001  | 39  | 56.71 | 119  | 55.80 | 4573.5     | 979714.38  | -19.64      | -175.62     | 0.02          | 1.48          | -175.49     | -19.81      |
| OOREN002  | 39  | 56.90 | 119  | 57.29 | 4488.2     | 979714.62  | -27.75      | -180.82     | 0.03          | 1.91          | -180.25     | -24.53      |
| OOREN003  | 39  | 56.97 | 119  | 58.08 | 4445.5     | 979714.12  | -32.32      | -183.93     | 0.05          | 2.08          | -183.19     | -27.45      |
| OOREN004  | 39  | 56.91 | 119  | 58.95 | 4452.1     | 979710.75  | -35.01      | -186.85     | 0.07          | 1.91          | -186.27     | -30.50      |
| OOREN005  | 39  | 52.94 | 119  | 58.03 | 4773.6     | 979687.19  | -22.44      | -185.25     | 0.09          | 1.93          | -184.71     | -27.82      |
| OOREN006  | 39  | 53.71 | 119  | 58.78 | 4662.1     | 979690.62  | -30.61      | -189.61     | 0.02          | 1.86          | -189.12     | -32.41      |
| OOREN007  | 39  | 52.39 | 119  | 57.72 | 4842.5     | 979683.56  | -18.78      | -183.94     | 0.07          | 2.05          | -183.28     | -26.27      |
| OOREN008  | 39  | 51.99 | 119  | 56.63 | 4829.4     | 979685.69  | -17.31      | -182.02     | 0.09          | 1.45          | -181.96     | -24.84      |
| OOREN009  | 39  | 48.18 | 119  | 54.72 | 5692.3     | 979632.38  | 16.12       | -178.02     | 0.10          | 1.31          | -178.18     | -20.30      |
| OOREN010  | 39  | 49.00 | 119  | 54.52 | 5757.9     | 979629.62  | 18.30       | -178.08     | 0.03          | 1.17          | -178.38     | -20.79      |
| OOREN011  | 39  | 49.58 | 119  | 54.72 | 5741.5     | 979630.88  | 17.17       | -178.65     | 0.05          | 1.40          | -178.73     | -21.28      |
| OOREN012  | 39  | 50.70 | 119  | 53.37 | 6106.8     | 979607.00  | 25.95       | -182.33     | 0.46          | 3.44          | -180.39     | -23.47      |

Table 2. Principal facts of gravity stations in the Antelope Valley–Bedell Flat area.— Continued

| Station  | Lat |       | Long |       | Elev<br>ft | OG<br>mGal | FAA<br>mGal | SBA<br>mGal | TC            |               | CBA<br>mGal | ISO<br>mGal |
|----------|-----|-------|------|-------|------------|------------|-------------|-------------|---------------|---------------|-------------|-------------|
|          | deg | min   | deg  | min   |            |            |             |             | inner<br>mGal | total<br>mGal |             |             |
| OOREN013 | 39  | 52.08 | 119  | 53.48 | 5720.9     | 979634.88  | 15.56       | -179.56     | 0.11          | 1.79          | -179.25     | -22.62      |
| OOREN014 | 39  | 46.41 | 119  | 53.49 | 5661.8     | 979628.88  | 12.41       | -180.69     | 0.10          | 1.39          | -180.77     | -22.50      |
| OOREN015 | 39  | 51.74 | 119  | 48.21 | 5327.5     | 979664.88  | 9.07        | -172.63     | 0.10          | 1.44          | -172.64     | -16.22      |
| OOREN016 | 39  | 55.01 | 119  | 54.04 | 5079.1     | 979677.44  | -6.55       | -179.78     | 0.75          | 1.68          | -179.52     | -23.56      |
| OOREN017 | 39  | 55.46 | 119  | 54.12 | 4886.7     | 979691.75  | -11.01      | -177.68     | 0.06          | 1.23          | -177.84     | -21.98      |
| OOREN018 | 39  | 55.42 | 119  | 52.90 | 5265.2     | 979672.62  | 5.47        | -174.10     | 0.15          | 1.69          | -173.85     | -18.16      |
| OOREN019 | 39  | 56.83 | 119  | 52.79 | 5282.4     | 979678.19  | 10.58       | -169.59     | 0.26          | 2.32          | -168.71     | -13.46      |
| OOREN020 | 39  | 57.44 | 119  | 53.25 | 5158.9     | 979690.75  | 10.67       | -165.28     | 0.34          | 1.85          | -164.86     | -9.74       |
| OOREN021 | 39  | 56.56 | 119  | 54.21 | 4792.3     | 979705.50  | -7.76       | -171.21     | 0.05          | 1.29          | -171.30     | -15.71      |
| OOREN022 | 39  | 51.57 | 119  | 48.39 | 5226.6     | 979669.81  | 4.77        | -173.49     | 0.08          | 1.25          | -173.68     | -17.15      |
| OOREN023 | 39  | 51.30 | 119  | 48.12 | 5238.6     | 979669.00  | 5.51        | -173.16     | 0.07          | 1.17          | -173.41     | -16.83      |
| OOREN024 | 39  | 50.68 | 119  | 47.16 | 5291.6     | 979667.25  | 9.63        | -170.84     | 0.06          | 1.17          | -171.11     | -14.48      |
| OOREN025 | 39  | 50.42 | 119  | 46.71 | 5152.6     | 979674.44  | 4.14        | -171.60     | 0.23          | 1.54          | -171.48     | -14.82      |
| OOREN026 | 39  | 50.15 | 119  | 46.36 | 5040.2     | 979680.56  | 0.13        | -171.77     | 0.12          | 1.45          | -171.73     | -15.01      |
| OOREN027 | 39  | 50.04 | 119  | 45.89 | 4947.8     | 979684.94  | -4.05       | -172.80     | 0.11          | 1.51          | -172.69     | -15.95      |
| OOREN028 | 39  | 50.01 | 119  | 45.47 | 4877.4     | 979690.75  | -4.80       | -171.15     | 0.07          | 1.43          | -171.11     | -14.39      |
| OOREN029 | 39  | 49.81 | 119  | 46.73 | 5129.8     | 979675.50  | 3.98        | -170.98     | 0.17          | 1.27          | -171.13     | -14.31      |
| OOREN030 | 39  | 49.47 | 119  | 47.05 | 5234.5     | 979667.88  | 6.73        | -171.80     | 0.11          | 1.01          | -172.22     | -15.27      |
| OOREN031 | 39  | 48.97 | 119  | 47.39 | 5242.0     | 979665.56  | 5.81        | -172.98     | 0.01          | 0.84          | -173.57     | -16.43      |
| OOREN032 | 39  | 48.91 | 119  | 47.67 | 5261.3     | 979664.69  | 6.84        | -172.60     | 0.03          | 0.82          | -173.22     | -16.02      |
| OOREN033 | 39  | 48.85 | 119  | 47.95 | 5292.9     | 979663.00  | 8.21        | -172.31     | 0.03          | 0.80          | -172.95     | -15.72      |
| OOREN034 | 39  | 48.81 | 119  | 48.21 | 5308.0     | 979661.56  | 8.27        | -172.77     | 0.02          | 0.81          | -173.40     | -16.13      |
| OOREN035 | 39  | 48.59 | 119  | 47.11 | 5292.8     | 979663.19  | 8.80        | -171.72     | 0.02          | 0.89          | -172.26     | -15.07      |
| OOREN036 | 39  | 48.17 | 119  | 46.72 | 5484.8     | 979652.12  | 16.36       | -170.70     | 0.27          | 1.35          | -170.80     | -13.60      |
| OOREN037 | 39  | 47.58 | 119  | 46.35 | 5747.0     | 979636.19  | 25.97       | -170.04     | 0.09          | 1.77          | -169.74     | -12.51      |
| OOREN038 | 39  | 47.82 | 119  | 46.20 | 5829.5     | 979631.81  | 29.02       | -169.80     | 0.21          | 2.36          | -168.92     | -11.80      |
| OOREN039 | 39  | 47.74 | 119  | 45.98 | 6009.0     | 979618.69  | 32.88       | -172.07     | 1.52          | 5.26          | -168.30     | -11.24      |
| OOREN040 | 39  | 48.20 | 119  | 46.10 | 5800.0     | 979633.88  | 27.75       | -170.06     | 0.19          | 2.32          | -169.22     | -12.21      |
| OOREN041 | 39  | 48.24 | 119  | 45.68 | 5847.0     | 979630.69  | 28.88       | -170.54     | 0.49          | 3.36          | -168.66     | -11.71      |
| OOREN042 | 39  | 48.08 | 119  | 45.40 | 5667.8     | 979642.31  | 23.90       | -169.41     | 0.56          | 2.79          | -168.09     | -11.08      |
| OOREN043 | 39  | 47.84 | 119  | 45.08 | 5394.1     | 979659.25  | 15.49       | -168.48     | 0.47          | 2.04          | -167.89     | -10.76      |
| OOREN044 | 39  | 47.65 | 119  | 44.62 | 5055.5     | 979677.25  | 1.92        | -170.51     | 0.13          | 1.24          | -170.68     | -13.44      |
| OOREN045 | 39  | 47.65 | 119  | 43.80 | 4835.8     | 979686.81  | -9.16       | -174.09     | 0.09          | 0.95          | -174.53     | -17.36      |
| OOREN046 | 39  | 46.95 | 119  | 42.84 | 4636.0     | 979694.62  | -19.08      | -177.19     | 0.04          | 0.69          | -177.86     | -20.55      |
| OOREN047 | 39  | 48.43 | 119  | 42.46 | 4416.0     | 979718.25  | -18.34      | -168.95     | 0.02          | 0.93          | -169.35     | -12.44      |
| OOREN048 | 39  | 50.13 | 119  | 48.71 | 5161.1     | 979674.12  | 5.08        | -170.94     | 0.04          | 0.87          | -171.50     | -14.52      |
| OOREN049 | 39  | 49.67 | 119  | 48.74 | 5251.7     | 979667.38  | 7.55        | -171.56     | 0.06          | 0.85          | -172.14     | -15.06      |
| OOREN050 | 39  | 49.69 | 119  | 49.05 | 5223.6     | 979668.88  | 6.33        | -171.83     | 0.11          | 0.91          | -172.34     | -15.23      |
| OOREN051 | 39  | 49.72 | 119  | 49.32 | 5179.8     | 979671.06  | 4.35        | -172.31     | 0.11          | 0.94          | -172.80     | -15.67      |
| OOREN052 | 39  | 49.72 | 119  | 49.54 | 5133.2     | 979672.38  | 1.33        | -173.74     | 0.10          | 0.99          | -174.18     | -17.02      |
| OOREN053 | 39  | 49.73 | 119  | 49.79 | 5111.4     | 979670.06  | -3.08       | -177.41     | 0.03          | 0.96          | -177.88     | -20.68      |
| OOREN054 | 39  | 49.80 | 119  | 50.10 | 5105.1     | 979666.81  | -7.01       | -181.12     | 0.01          | 0.93          | -181.62     | -24.40      |
| OOREN055 | 39  | 49.88 | 119  | 50.28 | 5107.2     | 979665.69  | -8.04       | -182.23     | 0.02          | 0.92          | -182.72     | -25.49      |
| OOREN056 | 39  | 49.43 | 119  | 49.90 | 5179.8     | 979666.00  | -0.23       | -176.89     | 0.07          | 1.05          | -177.27     | -19.99      |
| OOREN057 | 39  | 49.27 | 119  | 50.13 | 5221.4     | 979662.31  | 0.19        | -177.89     | 0.07          | 1.12          | -178.20     | -20.84      |
| OOREN058 | 39  | 49.21 | 119  | 50.37 | 5215.3     | 979660.38  | -2.21       | -180.08     | 0.07          | 1.25          | -180.26     | -22.87      |
| OOREN059 | 39  | 46.89 | 119  | 49.32 | 5167.4     | 979664.75  | 1.10        | -175.14     | 0.03          | 1.45          | -175.11     | -17.16      |
| OOREN060 | 39  | 46.89 | 119  | 49.07 | 5144.4     | 979667.25  | 1.43        | -174.03     | 0.01          | 1.21          | -174.24     | -16.30      |
| OOREN061 | 39  | 46.65 | 119  | 48.91 | 5203.2     | 979665.31  | 5.37        | -172.09     | 0.14          | 1.07          | -172.44     | -14.49      |
| OOREN062 | 39  | 46.75 | 119  | 48.75 | 5184.1     | 979666.75  | 4.85        | -171.96     | 0.10          | 1.00          | -172.39     | -14.47      |
| OOREN063 | 39  | 46.89 | 119  | 48.75 | 5162.5     | 979668.00  | 3.87        | -172.20     | 0.04          | 0.99          | -172.64     | -14.74      |
| OOREN064 | 39  | 45.47 | 119  | 48.74 | 5144.2     | 979665.06  | 1.34        | -174.11     | 0.03          | 0.91          | -174.63     | -16.30      |
| OOREN065 | 39  | 45.36 | 119  | 48.97 | 5123.2     | 979665.62  | 0.05        | -174.68     | 0.02          | 0.93          | -175.17     | -16.79      |
| OOREN066 | 39  | 45.31 | 119  | 49.32 | 5112.8     | 979665.31  | -1.14       | -175.52     | 0.02          | 1.06          | -175.88     | -17.45      |
| OOREN067 | 39  | 47.65 | 119  | 48.81 | 5174.8     | 979667.50  | 3.38        | -173.11     | 0.13          | 1.27          | -173.27     | -15.58      |
| OOREN068 | 39  | 51.72 | 119  | 48.60 | 5212.3     | 979670.12  | 3.55        | -174.22     | 0.09          | 1.29          | -174.36     | -17.85      |
| OOREN069 | 39  | 51.92 | 119  | 49.04 | 5092.3     | 979676.25  | -1.90       | -175.58     | 0.06          | 1.35          | -175.65     | -19.12      |
| OOREN070 | 39  | 52.12 | 119  | 49.53 | 5044.4     | 979677.69  | -5.28       | -177.32     | 0.03          | 1.30          | -177.43     | -20.92      |
| OOREN071 | 39  | 52.31 | 119  | 50.02 | 5009.8     | 979677.94  | -8.56       | -179.42     | 0.03          | 1.29          | -179.55     | -23.05      |

Table 2. Principal facts of gravity stations in the Antelope Valley–Bedell Flat area.— Continued

| Station  | Lat |       | Long |       | Elev<br>ft | OG<br>mGal | FAA<br>mGal | SBA<br>mGal | TC            |               | CBA<br>mGal | ISO<br>mGal |
|----------|-----|-------|------|-------|------------|------------|-------------|-------------|---------------|---------------|-------------|-------------|
|          | deg | min   | deg  | min   |            |            |             |             | inner<br>mGal | total<br>mGal |             |             |
| OOREN072 | 39  | 52.62 | 119  | 49.67 | 5095.2     | 979675.94  | -3.01       | -176.79     | 0.07          | 1.63          | -176.58     | -20.26      |
| OOREN073 | 39  | 52.95 | 119  | 49.29 | 5306.5     | 979666.75  | 7.18        | -173.81     | 0.34          | 2.32          | -172.93     | -16.79      |
| OOREN074 | 39  | 53.21 | 119  | 48.85 | 5683.2     | 979645.56  | 20.99       | -172.85     | 0.60          | 3.28          | -171.04     | -15.12      |
| OOREN075 | 39  | 53.43 | 119  | 48.34 | 6259.8     | 979614.25  | 43.59       | -169.91     | 0.76          | 5.21          | -166.20     | -10.57      |
| OOREN076 | 39  | 53.79 | 119  | 47.91 | 6842.9     | 979579.12  | 62.68       | -170.71     | 1.29          | 8.75          | -163.47     | -8.17       |
| OOREN077 | 39  | 52.83 | 119  | 48.45 | 5571.8     | 979652.12  | 17.67       | -172.36     | 0.64          | 3.28          | -170.55     | -14.53      |
| OOREN078 | 39  | 52.50 | 119  | 48.10 | 5568.6     | 979652.75  | 18.46       | -171.46     | 0.39          | 2.76          | -170.16     | -14.09      |
| OOREN079 | 39  | 51.20 | 119  | 47.75 | 5256.2     | 979670.06  | 8.38        | -170.89     | 0.08          | 1.26          | -171.07     | -14.51      |
| OOREN080 | 39  | 51.49 | 119  | 47.55 | 5412.7     | 979661.56  | 14.15       | -170.45     | 0.11          | 1.57          | -170.33     | -13.94      |
| OOREN081 | 39  | 51.83 | 119  | 47.26 | 5559.6     | 979654.56  | 20.44       | -169.18     | 0.24          | 2.34          | -168.30     | -12.11      |
| OOREN082 | 39  | 52.00 | 119  | 46.86 | 5863.2     | 979637.31  | 31.49       | -168.48     | 1.19          | 4.36          | -165.60     | -9.60       |
| OOREN083 | 39  | 52.32 | 119  | 47.20 | 5674.0     | 979649.19  | 25.09       | -168.43     | 1.14          | 4.27          | -165.63     | -9.63       |
| OOREN084 | 39  | 50.55 | 119  | 47.91 | 5272.7     | 979668.06  | 8.88        | -170.95     | 0.24          | 1.19          | -171.20     | -14.45      |
| OOREN085 | 39  | 50.33 | 119  | 47.65 | 5505.4     | 979653.88  | 16.90       | -170.87     | 0.20          | 1.43          | -170.89     | -14.19      |
| OOREN086 | 39  | 50.14 | 119  | 47.49 | 5608.7     | 979646.88  | 19.85       | -171.44     | 0.10          | 1.69          | -171.22     | -14.53      |
| OOREN087 | 39  | 48.04 | 119  | 48.43 | 5237.1     | 979664.81  | 5.98        | -172.64     | 0.03          | 0.96          | -173.11     | -15.57      |
| OOREN088 | 39  | 48.05 | 119  | 48.17 | 5265.5     | 979663.00  | 6.84        | -172.74     | 0.07          | 0.89          | -173.29     | -15.80      |
| OOREN089 | 39  | 48.04 | 119  | 47.98 | 5271.5     | 979662.25  | 6.70        | -173.09     | 0.07          | 0.87          | -173.65     | -16.18      |
| OOREN090 | 39  | 48.17 | 119  | 47.79 | 5262.0     | 979663.12  | 6.47        | -172.99     | 0.16          | 0.98          | -173.44     | -16.01      |
| OOREN091 | 39  | 48.20 | 119  | 48.26 | 5293.9     | 979661.62  | 7.94        | -172.62     | 0.10          | 0.91          | -173.14     | -15.67      |
| OOREN092 | 39  | 48.33 | 119  | 48.14 | 5370.4     | 979657.00  | 10.27       | -172.90     | 0.22          | 0.98          | -173.37     | -15.98      |
| OOREN093 | 39  | 48.31 | 119  | 47.98 | 5515.3     | 979646.00  | 12.93       | -175.17     | 0.94          | 1.92          | -174.72     | -17.39      |
| OOREN094 | 39  | 48.76 | 119  | 47.62 | 5256.3     | 979664.56  | 6.47        | -172.80     | 0.03          | 0.83          | -173.40     | -16.17      |
| OOREN095 | 39  | 48.62 | 119  | 47.63 | 5259.8     | 979664.31  | 6.78        | -172.61     | 0.03          | 0.84          | -173.20     | -15.91      |
| OOREN096 | 39  | 54.36 | 119  | 54.32 | 4804.9     | 979692.38  | -16.45      | -180.33     | 0.10          | 1.39          | -180.31     | -24.00      |
| OOREN097 | 39  | 54.04 | 119  | 55.51 | 4754.5     | 979696.62  | -16.48      | -178.64     | 0.05          | 1.44          | -178.57     | -22.10      |
| OOREN098 | 39  | 54.04 | 119  | 55.51 | 4742.5     | 979695.44  | -18.75      | -180.50     | 0.04          | 1.48          | -180.39     | -23.92      |
| OOREN099 | 39  | 53.94 | 119  | 55.98 | 4741.0     | 979692.69  | -21.52      | -183.22     | 0.08          | 1.54          | -183.05     | -26.51      |
| OOREN100 | 39  | 53.93 | 119  | 56.41 | 4807.8     | 979688.19  | -19.69      | -183.66     | 0.18          | 1.50          | -183.55     | -27.02      |
| OOREN101 | 39  | 53.57 | 119  | 57.05 | 4702.1     | 979692.81  | -24.47      | -184.84     | 0.48          | 1.90          | -184.31     | -27.61      |
| OOREN102 | 39  | 53.40 | 119  | 57.69 | 4693.4     | 979693.94  | -23.93      | -184.00     | 0.04          | 1.50          | -183.86     | -27.09      |
| OOREN103 | 39  | 53.62 | 119  | 54.02 | 4966.4     | 979682.38  | -10.18      | -179.57     | 0.23          | 1.29          | -179.68     | -23.22      |
| OOREN104 | 39  | 53.36 | 119  | 54.44 | 5036.0     | 979680.69  | -4.92       | -176.68     | 0.17          | 1.23          | -176.87     | -20.33      |
| OOREN105 | 39  | 53.23 | 119  | 54.89 | 4831.4     | 979689.19  | -15.43      | -180.21     | 0.15          | 1.41          | -180.19     | -23.53      |
| OOREN106 | 39  | 54.87 | 119  | 54.71 | 4950.6     | 979683.75  | -12.14      | -180.99     | 0.14          | 1.18          | -181.20     | -25.10      |
| OOREN107 | 39  | 54.80 | 119  | 55.21 | 5275.7     | 979665.19  | -0.01       | -179.95     | 0.82          | 2.20          | -179.18     | -23.13      |
| OOREN108 | 39  | 55.00 | 119  | 55.85 | 5601.1     | 979643.62  | 8.69        | -182.34     | 0.40          | 2.82          | -180.98     | -25.09      |
| OOREN109 | 39  | 54.92 | 119  | 56.45 | 6052.7     | 979611.44  | 19.05       | -187.38     | 1.33          | 7.05          | -181.83     | -26.04      |
| OOREN110 | 39  | 54.99 | 119  | 56.71 | 6016.3     | 979614.25  | 18.38       | -186.81     | 0.86          | 5.84          | -182.46     | -26.67      |
| OOREN111 | 39  | 52.12 | 119  | 53.01 | 5662.1     | 979638.94  | 14.00       | -179.11     | 0.47          | 1.96          | -178.62     | -22.02      |
| OOREN112 | 39  | 52.03 | 119  | 52.54 | 5777.7     | 979631.31  | 17.38       | -179.68     | 0.56          | 2.74          | -178.42     | -21.85      |
| OOREN113 | 39  | 51.62 | 119  | 52.71 | 5759.3     | 979633.38  | 18.30       | -178.13     | 0.25          | 1.85          | -177.76     | -21.05      |
| OOREN114 | 39  | 51.29 | 119  | 52.88 | 5688.4     | 979637.00  | 15.75       | -178.26     | 0.35          | 1.74          | -177.99     | -21.13      |
| OOREN115 | 39  | 51.13 | 119  | 52.40 | 5709.0     | 979635.56  | 16.52       | -178.20     | 0.48          | 1.98          | -177.69     | -20.85      |
| OOREN116 | 39  | 50.98 | 119  | 52.06 | 5501.7     | 979646.75  | 8.47        | -179.18     | 0.22          | 1.43          | -179.20     | -22.25      |
| OOREN117 | 39  | 50.68 | 119  | 52.47 | 5758.8     | 979631.62  | 17.90       | -178.51     | 0.43          | 1.98          | -178.00     | -21.04      |
| OOREN118 | 39  | 50.44 | 119  | 52.88 | 5902.9     | 979621.69  | 21.88       | -179.44     | 0.21          | 2.08          | -178.85     | -21.83      |
| OOREN119 | 39  | 50.04 | 119  | 53.20 | 5736.8     | 979631.88  | 17.05       | -178.61     | 0.34          | 1.55          | -178.54     | -21.33      |
| OOREN120 | 39  | 49.63 | 119  | 54.12 | 5738.5     | 979631.19  | 17.14       | -178.58     | 0.05          | 1.22          | -178.83     | -21.47      |
| OOREN121 | 39  | 49.74 | 119  | 53.65 | 5679.0     | 979635.50  | 15.67       | -178.02     | 0.24          | 1.30          | -178.19     | -20.85      |
| OOREN122 | 39  | 49.65 | 119  | 52.99 | 5691.1     | 979633.56  | 15.02       | -179.08     | 0.22          | 1.31          | -179.25     | -21.94      |
| OOREN123 | 39  | 49.61 | 119  | 52.50 | 5590.3     | 979638.69  | 10.75       | -179.91     | 0.20          | 1.19          | -180.19     | -22.89      |
| OOREN124 | 39  | 49.54 | 119  | 52.28 | 5515.3     | 979642.62  | 7.71        | -180.40     | 0.16          | 1.06          | -180.79     | -23.43      |
| OOREN125 | 39  | 50.68 | 119  | 50.99 | 5119.7     | 979667.25  | -6.50       | -181.12     | 0.08          | 1.05          | -181.48     | -24.38      |
| OOREN126 | 39  | 50.40 | 119  | 51.55 | 5227.9     | 979660.62  | -2.56       | -180.86     | 0.17          | 1.23          | -181.07     | -23.90      |
| OOREN127 | 39  | 50.27 | 119  | 52.23 | 5425.8     | 979650.81  | 6.42        | -178.64     | 0.35          | 1.51          | -178.58     | -21.41      |
| OOREN128 | 39  | 51.21 | 119  | 48.78 | 5099.5     | 979675.88  | -0.60       | -174.52     | 0.02          | 0.99          | -174.95     | -18.23      |
| OOREN129 | 39  | 51.05 | 119  | 49.02 | 5064.4     | 979677.56  | -1.97       | -174.70     | 0.01          | 0.91          | -175.20     | -18.41      |
| OOREN130 | 39  | 50.90 | 119  | 49.23 | 5040.5     | 979678.50  | -3.02       | -174.94     | 0.00          | 0.88          | -175.47     | -18.60      |

Table 2. Principal facts of gravity stations in the Antelope Valley–Bedell Flat area.— Continued

| Station  | Lat |       | Long |       | Elev<br>ft | OG<br>mGal | FAA<br>mGal | SBA<br>mGal | TC            |               | CBA<br>mGal | ISO<br>mGal |
|----------|-----|-------|------|-------|------------|------------|-------------|-------------|---------------|---------------|-------------|-------------|
|          | deg | min   | deg  | min   |            |            |             |             | inner<br>mGal | total<br>mGal |             |             |
| OOREN131 | 39  | 50.74 | 119  | 49.45 | 5037.6     | 979678.38  | -3.18       | -174.99     | 0.00          | 0.85          | -175.56     | -18.64      |
| OOREN132 | 39  | 50.60 | 119  | 49.65 | 5042.9     | 979677.06  | -3.81       | -175.81     | 0.00          | 0.83          | -176.39     | -19.41      |
| OOREN133 | 39  | 50.55 | 119  | 49.94 | 5053.2     | 979673.69  | -6.12       | -178.46     | 0.00          | 0.82          | -179.05     | -22.01      |
| OOREN134 | 39  | 50.51 | 119  | 50.20 | 5068.3     | 979670.44  | -7.92       | -180.78     | 0.00          | 0.83          | -181.37     | -24.31      |
| OOREN135 | 39  | 50.45 | 119  | 50.45 | 5084.7     | 979668.19  | -8.52       | -181.94     | 0.01          | 0.86          | -182.50     | -25.39      |
| OOREN136 | 39  | 51.26 | 119  | 50.80 | 5047.3     | 979672.25  | -9.15       | -181.29     | 0.02          | 1.01          | -181.69     | -24.76      |
| OOREN137 | 39  | 49.28 | 119  | 47.18 | 5226.1     | 979667.62  | 5.95        | -172.29     | 0.05          | 0.94          | -172.78     | -15.76      |
| OOREN138 | 39  | 49.30 | 119  | 46.90 | 5214.7     | 979669.38  | 6.62        | -171.23     | 0.06          | 0.98          | -171.68     | -14.71      |
| OOREN139 | 39  | 49.31 | 119  | 46.63 | 5289.9     | 979665.31  | 9.58        | -170.84     | 0.13          | 1.06          | -171.21     | -14.29      |
| OOREN140 | 39  | 49.32 | 119  | 46.34 | 5397.4     | 979659.12  | 13.46       | -170.63     | 0.28          | 1.45          | -170.63     | -13.79      |
| OOREN141 | 39  | 49.33 | 119  | 46.11 | 5530.8     | 979650.31  | 17.21       | -171.43     | 0.50          | 2.35          | -170.54     | -13.76      |
| OOREN142 | 39  | 49.40 | 119  | 45.91 | 5296.1     | 979665.12  | 9.85        | -170.78     | 0.74          | 2.02          | -170.20     | -13.40      |
| OOREN143 | 39  | 49.37 | 119  | 45.61 | 5116.5     | 979676.38  | 4.23        | -170.27     | 0.46          | 1.77          | -169.92     | -13.10      |
| OOREN144 | 39  | 49.34 | 119  | 45.33 | 4967.0     | 979685.25  | -0.90       | -170.30     | 0.27          | 1.69          | -170.01     | -13.17      |
| OOREN145 | 39  | 49.30 | 119  | 45.04 | 4815.3     | 979694.19  | -6.12       | -170.35     | 0.25          | 1.84          | -169.89     | -13.03      |
| OOREN146 | 39  | 49.27 | 119  | 44.77 | 4730.2     | 979699.12  | -9.15       | -170.48     | 0.19          | 1.81          | -170.05     | -13.18      |
| OOREN147 | 39  | 49.08 | 119  | 44.27 | 4620.5     | 979705.38  | -12.90      | -170.49     | 0.25          | 1.87          | -169.97     | -13.08      |
| OOREN148 | 39  | 48.81 | 119  | 43.85 | 4631.2     | 979704.00  | -12.90      | -170.86     | 0.15          | 1.44          | -170.77     | -13.85      |
| OOREN149 | 39  | 48.50 | 119  | 43.48 | 4574.9     | 979705.31  | -16.42      | -172.45     | 0.35          | 1.56          | -172.24     | -15.26      |
| OOREN150 | 39  | 48.23 | 119  | 43.20 | 4588.4     | 979704.75  | -15.30      | -171.79     | 0.36          | 1.35          | -171.80     | -14.81      |
| OOREN151 | 39  | 47.81 | 119  | 42.22 | 4448.2     | 979715.62  | -16.96      | -168.67     | 0.03          | 0.90          | -169.11     | -12.06      |
| OOREN152 | 39  | 46.93 | 119  | 41.73 | 4486.3     | 979703.31  | -24.43      | -177.44     | 0.01          | 0.84          | -177.93     | -20.75      |
| OOREN153 | 39  | 49.49 | 119  | 42.83 | 4352.8     | 979724.44  | -19.63      | -168.09     | 0.02          | 1.16          | -168.25     | -11.58      |
| OOREN154 | 39  | 50.33 | 119  | 43.08 | 4271.2     | 979736.69  | -16.33      | -162.00     | 0.08          | 1.81          | -161.49     | -5.02       |
| OOREN155 | 39  | 51.24 | 119  | 43.37 | 4292.8     | 979736.44  | -15.90      | -162.31     | 0.03          | 1.78          | -161.83     | -5.60       |
| OOREN156 | 39  | 52.08 | 119  | 43.63 | 4313.5     | 979736.88  | -14.71      | -161.82     | 0.03          | 2.35          | -160.79     | -4.74       |
| OOREN157 | 39  | 51.12 | 119  | 43.88 | 4415.1     | 979727.31  | -13.34      | -163.93     | 0.07          | 2.06          | -163.19     | -6.86       |
| OOREN158 | 39  | 50.88 | 119  | 44.43 | 4616.8     | 979713.69  | -7.62       | -165.08     | 0.16          | 2.18          | -164.25     | -7.83       |
| OOREN159 | 39  | 50.50 | 119  | 44.75 | 4774.5     | 979702.00  | -3.91       | -166.75     | 0.17          | 1.75          | -166.38     | -9.86       |
| OOREN160 | 39  | 50.24 | 119  | 44.91 | 4854.9     | 979696.12  | -1.90       | -167.48     | 0.03          | 1.30          | -167.57     | -10.99      |
| OOREN161 | 39  | 50.13 | 119  | 44.79 | 4858.2     | 979696.06  | -1.48       | -167.18     | 0.04          | 1.20          | -167.37     | -10.78      |
| OOREN162 | 39  | 49.94 | 119  | 44.62 | 4908.3     | 979693.00  | 0.47        | -166.94     | 0.11          | 1.15          | -167.18     | -10.57      |
| OOREN163 | 39  | 49.80 | 119  | 44.45 | 5018.9     | 979686.00  | 4.05        | -167.13     | 0.27          | 1.46          | -167.08     | -10.50      |
| OOREN164 | 39  | 49.55 | 119  | 44.27 | 5112.6     | 979678.38  | 5.59        | -168.78     | 1.00          | 2.71          | -167.49     | -10.88      |
| OOREN165 | 39  | 50.18 | 119  | 45.64 | 4970.5     | 979685.50  | -1.55       | -171.08     | 0.20          | 1.57          | -170.91     | -14.25      |
| OOREN166 | 39  | 50.33 | 119  | 45.85 | 5172.3     | 979673.88  | 5.55        | -170.86     | 0.70          | 2.11          | -170.17     | -13.60      |
| OOREN167 | 39  | 48.83 | 119  | 48.66 | 5399.0     | 979655.12  | 10.33       | -173.81     | 0.23          | 1.07          | -174.19     | -16.91      |
| OOREN168 | 39  | 48.91 | 119  | 48.97 | 5555.7     | 979646.62  | 16.49       | -172.99     | 0.37          | 1.43          | -173.02     | -15.78      |
| OOREN169 | 39  | 48.86 | 119  | 49.35 | 5514.7     | 979649.75  | 15.84       | -172.24     | 0.34          | 1.35          | -172.35     | -15.05      |
| OOREN170 | 39  | 48.46 | 119  | 48.37 | 5301.9     | 979661.44  | 8.07        | -172.75     | 0.13          | 0.98          | -173.21     | -15.81      |
| OOREN171 | 39  | 48.20 | 119  | 48.71 | 5347.7     | 979657.88  | 9.26        | -173.13     | 0.45          | 1.36          | -173.22     | -15.71      |
| OOREN172 | 39  | 48.21 | 119  | 48.96 | 5540.1     | 979647.00  | 16.44       | -172.51     | 0.32          | 1.41          | -172.56     | -15.11      |
| OOREN173 | 39  | 48.36 | 119  | 49.15 | 5631.0     | 979642.12  | 19.88       | -172.17     | 0.16          | 1.40          | -172.24     | -14.86      |
| OOREN174 | 39  | 48.37 | 119  | 49.43 | 5552.3     | 979647.81  | 18.12       | -171.25     | 0.12          | 1.22          | -171.49     | -14.05      |
| OOREN175 | 39  | 48.45 | 119  | 49.60 | 5493.6     | 979651.38  | 16.03       | -171.34     | 0.09          | 1.23          | -171.57     | -14.09      |
| OOREN176 | 39  | 48.62 | 119  | 49.60 | 5511.4     | 979650.38  | 16.46       | -171.52     | 0.19          | 1.27          | -171.70     | -14.30      |
| OOREN177 | 39  | 47.96 | 119  | 50.23 | 5907.2     | 979622.88  | 27.16       | -174.31     | 0.60          | 2.91          | -172.88     | -15.35      |
| OOREN178 | 39  | 47.80 | 119  | 50.35 | 6024.8     | 979614.50  | 30.09       | -175.39     | 0.87          | 3.67          | -173.21     | -15.66      |
| OOREN179 | 39  | 47.58 | 119  | 50.51 | 6298.8     | 979595.44  | 37.10       | -177.73     | 1.12          | 5.43          | -173.81     | -16.29      |
| OOREN180 | 39  | 47.69 | 119  | 50.81 | 6608.8     | 979575.12  | 45.74       | -179.66     | 0.99          | 7.33          | -173.85     | -16.43      |
| OOREN181 | 39  | 47.25 | 119  | 50.10 | 5488.6     | 979646.69  | 12.70       | -174.50     | 0.61          | 3.52          | -172.44     | -14.59      |
| OOREN182 | 39  | 46.73 | 119  | 50.28 | 5564.8     | 979640.25  | 14.15       | -175.65     | 0.75          | 4.20          | -172.91     | -14.95      |
| OOREN183 | 39  | 46.61 | 119  | 50.09 | 5391.4     | 979650.38  | 8.15        | -175.73     | 0.38          | 3.31          | -173.87     | -15.83      |
| OOREN184 | 39  | 45.05 | 119  | 50.34 | 5385.1     | 979648.94  | 8.49        | -175.18     | 0.38          | 1.62          | -175.00     | -16.46      |
| OOREN185 | 39  | 45.51 | 119  | 51.37 | 5688.0     | 979633.81  | 21.14       | -172.86     | 0.65          | 3.00          | -171.33     | -12.92      |
| OOREN186 | 39  | 44.95 | 119  | 52.09 | 5400.0     | 979646.50  | 7.58        | -176.60     | 0.76          | 2.33          | -175.71     | -16.99      |
| OOREN187 | 39  | 46.33 | 119  | 52.51 | 5826.8     | 979623.25  | 22.37       | -176.36     | 0.91          | 2.92          | -174.93     | -16.75      |
| OOREN188 | 39  | 47.22 | 119  | 52.50 | 5741.0     | 979621.88  | 11.63       | -184.17     | 0.11          | 1.56          | -184.09     | -26.13      |
| OOREN189 | 39  | 47.59 | 119  | 52.29 | 5866.0     | 979618.50  | 19.45       | -180.62     | 0.49          | 2.00          | -180.10     | -22.29      |

Table 2. Principal facts of gravity stations in the Antelope Valley–Bedell Flat area.— Continued

| Station  | Lat |       | Long |       | Elev<br>ft | OG<br>mGal | FAA<br>mGal | SBA<br>mGal | TC            |               | CBA<br>mGal | ISO<br>mGal |
|----------|-----|-------|------|-------|------------|------------|-------------|-------------|---------------|---------------|-------------|-------------|
|          | deg | min   | deg  | min   |            |            |             |             | inner<br>mGal | total<br>mGal |             |             |
| 00REN190 | 39  | 47.66 | 119  | 52.09 | 5889.5     | 979614.81  | 17.86       | -183.01     | 0.19          | 1.83          | -182.67     | -24.90      |
| 00REN191 | 39  | 47.53 | 119  | 51.90 | 6004.2     | 979609.94  | 23.97       | -180.81     | 0.34          | 2.43          | -179.88     | -22.14      |
| 00REN192 | 39  | 49.06 | 119  | 50.63 | 5325.5     | 979651.88  | -0.15       | -181.78     | 0.16          | 1.34          | -181.88     | -24.45      |
| 00REN193 | 39  | 56.67 | 119  | 49.14 | 5299.0     | 979684.62  | 18.86       | -161.87     | 1.03          | 3.41          | -159.90     | -4.90       |
| 00REN194 | 39  | 56.63 | 119  | 50.00 | 5518.0     | 979671.06  | 25.89       | -162.31     | 0.91          | 3.80          | -159.97     | -4.94       |
| 00REN195 | 39  | 56.26 | 119  | 50.27 | 5797.0     | 979652.50  | 34.10       | -163.62     | 1.71          | 4.79          | -160.31     | -5.24       |
| 00REN196 | 39  | 47.12 | 119  | 46.15 | 5615.9     | 979644.31  | 22.46       | -169.07     | 0.13          | 1.56          | -168.98     | -11.61      |
| 00REN197 | 39  | 46.83 | 119  | 45.84 | 5394.0     | 979657.69  | 15.43       | -168.54     | 0.24          | 1.35          | -168.64     | -11.15      |
| 00REN198 | 39  | 46.58 | 119  | 45.30 | 5105.6     | 979674.81  | 5.80        | -168.33     | 0.13          | 1.05          | -168.70     | -11.14      |
| 00REN199 | 39  | 46.21 | 119  | 45.00 | 4995.4     | 979676.62  | -2.18       | -172.55     | 0.06          | 0.84          | -173.12     | -15.42      |
| 00REN200 | 39  | 45.91 | 119  | 44.60 | 4892.0     | 979680.88  | -7.19       | -174.04     | 0.07          | 0.76          | -174.67     | -16.90      |
| 00REN201 | 39  | 45.76 | 119  | 45.01 | 4989.7     | 979675.00  | -3.68       | -173.86     | 0.09          | 0.81          | -174.45     | -16.61      |
| 00REN202 | 39  | 45.57 | 119  | 45.32 | 5064.5     | 979670.00  | -1.39       | -174.12     | 0.06          | 0.80          | -174.74     | -16.82      |
| 00REN203 | 39  | 44.78 | 119  | 45.94 | 5220.0     | 979659.25  | 3.69        | -174.34     | 0.08          | 0.85          | -174.92     | -16.77      |
| 00REN204 | 39  | 44.26 | 119  | 46.54 | 5243.2     | 979654.12  | 1.45        | -177.37     | 0.13          | 0.88          | -177.93     | -19.58      |
| 00REN205 | 39  | 43.42 | 119  | 46.55 | 5082.5     | 979656.44  | -10.05      | -183.39     | 0.01          | 0.62          | -184.19     | -25.56      |
| 00REN206 | 39  | 43.79 | 119  | 47.20 | 5205.7     | 979657.69  | 2.25        | -175.30     | 0.09          | 0.80          | -175.93     | -17.36      |
| 00REN207 | 39  | 44.06 | 119  | 47.62 | 5371.8     | 979648.75  | 8.47        | -174.74     | 0.08          | 0.79          | -175.40     | -16.90      |
| 00REN208 | 39  | 45.95 | 119  | 47.86 | 5458.0     | 979649.69  | 14.75       | -171.40     | 0.20          | 1.17          | -171.69     | -13.70      |
| 00REN209 | 39  | 45.54 | 119  | 47.99 | 5357.6     | 979653.88  | 10.06       | -172.67     | 0.45          | 1.40          | -172.72     | -14.57      |
| 00REN210 | 39  | 49.83 | 119  | 45.29 | 4849.8     | 979692.50  | -5.38       | -170.79     | 0.06          | 1.36          | -170.82     | -14.08      |
| 00REN211 | 39  | 49.61 | 119  | 45.08 | 4781.4     | 979696.62  | -7.33       | -170.41     | 0.10          | 1.54          | -170.25     | -13.47      |