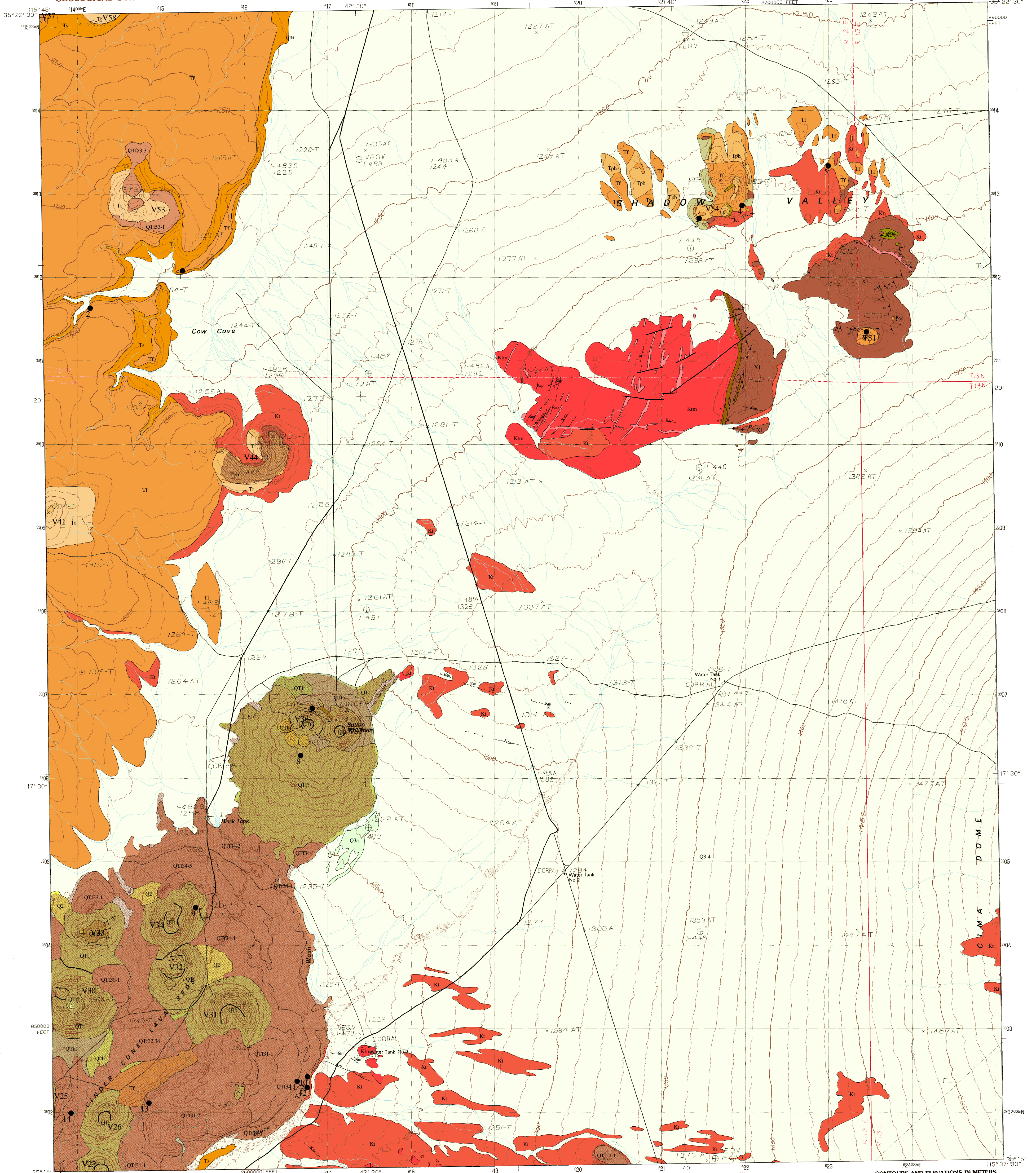


UNITED STATES
DEPARTMENT OF THE INTERIOR
GEOLOGICAL SURVEY

COW COVE QUADRANGLE
CALIFORNIA—SAN BERNARDINO CO.
7.5 MINUTE SERIES (TOPOGRAPHIC)



PRODUCED BY THE UNITED STATES GEOLOGICAL SURVEY CONTROL BY USGS, NOS/NOAA COMPILED FROM AERIAL PHOTOGRAPHS TAKEN 1978 FIELD CHECKED 1986 MAP EDITED 1983 PROJECTION UNIVERSAL TRANSVERSE MERCATOR GRID: 1000-METER UNIVERSAL TRANSVERSE MERCATOR, ZONE 11 10,000-FOOT STATE GRID TICS CALIFORNIA, ZONE 5 UTM GRID DECLINATION 1983 EAST 1980 MAGNETIC NORTH DECLINATION 14° EAST VERTICAL DATUM NATIONAL GEODETIC VERTICAL DATUM OF 1929 HORIZONTAL DATUM 1927 NORTH AMERICAN DATUM To place on the predicted North American Datum of 1983, move the projection lines as shown by dashed corner ticks (3 meters north / 77 meters east) There may be private inholdings within the boundaries of any Federal and State Reservations shown on this map Certain land lines are omitted because of insufficient data

PROVISIONAL MAP
Produced from original manuscript drawings. Information shown as of date of field check.

SCALE 1:24 000
KILOMETERS 0 1 2
METERS 0 1000 2000
MILES 0 1 2
FEET 0 1000 2000 3000 4000 5000 6000 7000 8000 9000 10 000
CONTOUR INTERVAL 10 METERS
To convert meters to feet multiply by 3.2808
To convert feet to meters multiply by 0.3048
THIS MAP COMPLIES WITH NATIONAL MAP ACCURACY STANDARDS FOR SALE BY U.S. GEOLOGICAL SURVEY, DENVER, COLORADO 80225, OR RESTON, VIRGINIA 22092

1	2	3	1	Solomons Knob
2	3	4	2	Valley Wells
3	4	5	3	Mescal Range
4	5	6	4	Granite Spring
5	6	7	5	Chino Dome
6	7	8	6	Indian Spring
7	8		7	Marl Mountains
8			8	Chino

ADJOINING 7.5' QUADRANGLE NAMES

CONTOURS AND ELEVATIONS IN METERS
ROAD LEGEND
Improved Road.....
Unimproved Road.....
Trail.....
Interstate Route U.S. Route State Route

COW COVE, CALIF.
PROVISIONAL EDITION 1983
35115-C6-TM-024

Digital Version of 'Open-File Report 92-179: Geologic Map of the Cow Cove Quadrangle, San Bernardino County, California'

Geology By
Howard G. Wilshire
GIS Database By
David R. Bedford and Teresa Coleman