

Figure 1. Major fault systems, lineaments, and structural regions in the map area

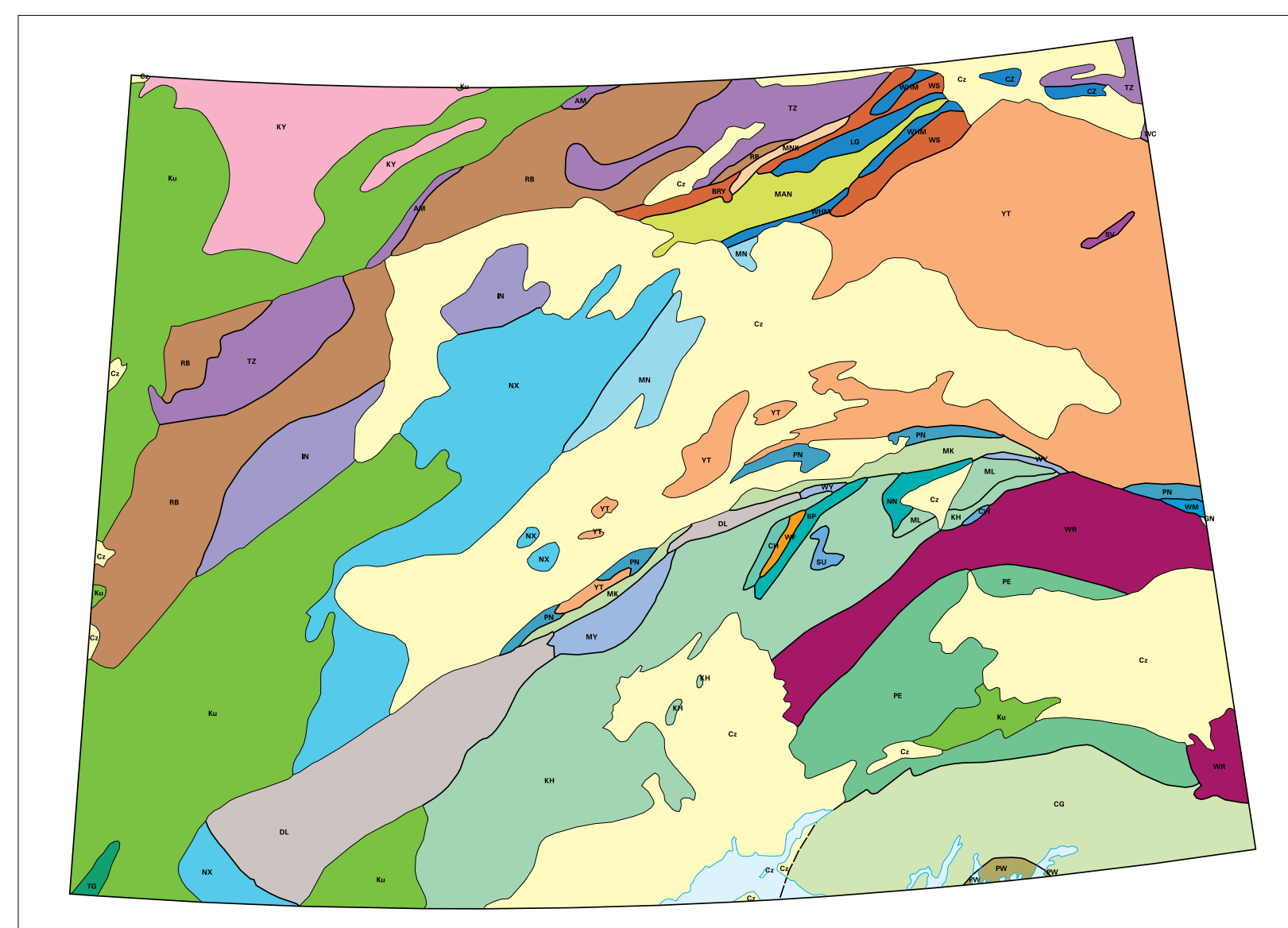


Figure 2. Tectonostratigraphic terranes of Interior Alaska (Silberling and others, 1994)

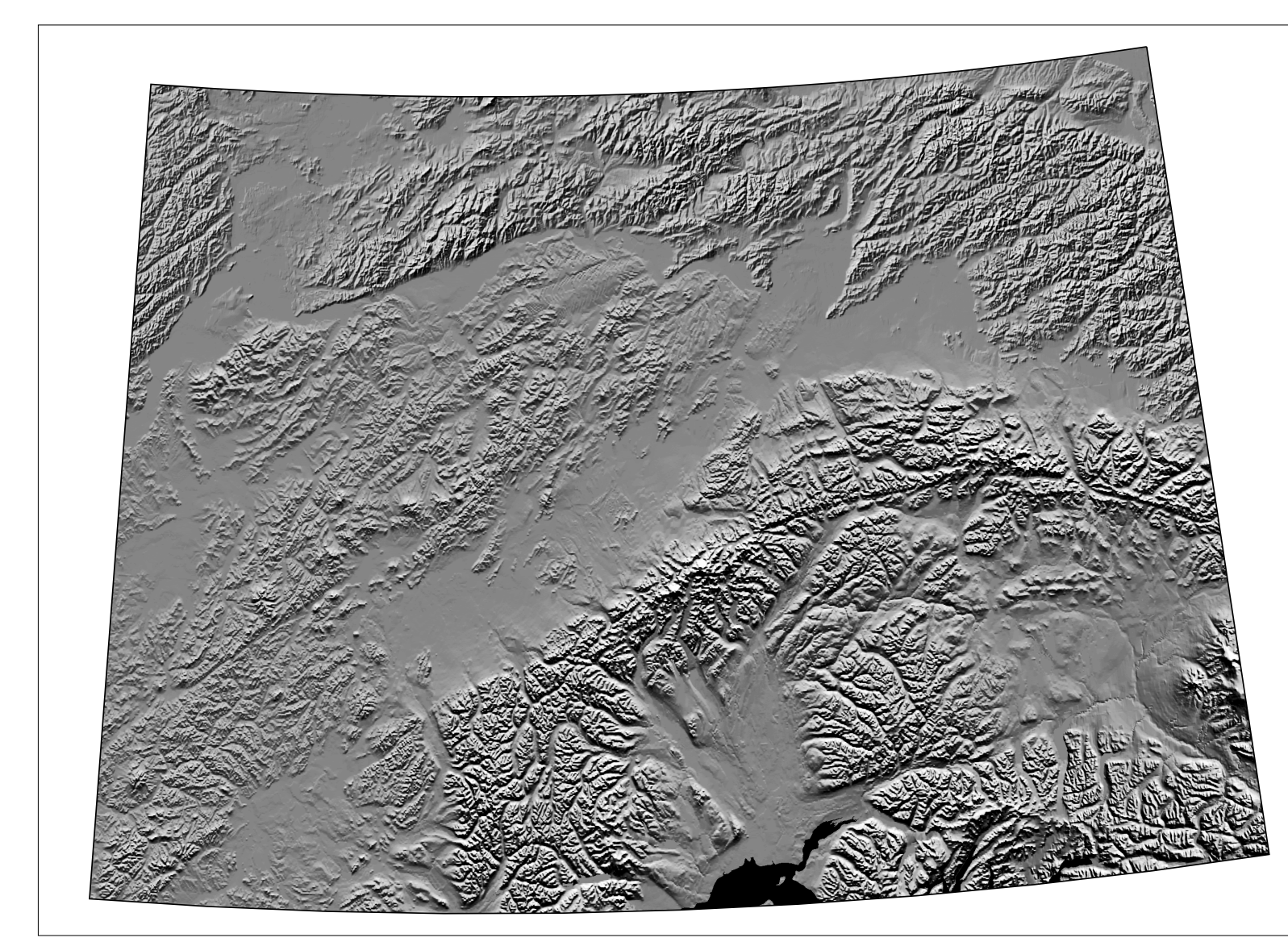


Figure 3. Shaded relief map of Interior Alaska (after Riehle and others, 1997)

Key to figure 2. AM, Angayucham; BP, Broad Pass; BRY, Baldy; CG, Chugach; CH, Chulitna; CW, Clearwater; CZ, Cenozoic deposits; CZ, Crazy Mountains; DL, Dillingen; GN, Graven-Nutzotin belt; IN, Innoko; KH, Kahilna; Ku, Upper Cretaceous rocks; KY, Koyukuk; LG, Livengood; MAN, Manley; MK, McKinley; NL, MacLaren; MN, Minchumina; MNK, Minook; MY, Mystic; NN, Nenana; NX, Nixon Fork; PC, Porcupine; PE, Pennoslar; PN, Pingston; PW, Prince William; RB, Ruby; SU, Suislaw; SV, Seventymile; TG, Togiak; TZ, Totina; WC, Woodchopper Canyon; WF, West Fork; WHM, White Mountains; WM, Windy-McKinley; WR, Wrangellia; WS, Wickersham; WY, Windy; YT, Yukon-Tanana.

Colors assigned approximate the colors used on sheets 1 and 2 for important geologic units within the terrane.

LIST OF MAP UNITS

LIST OF MAP UNITS. A comprehensive legend for the geologic map, organized by geological period and rock type. It includes symbols for ice fields, water bodies, and various rock units from the Tertiary, Jurassic, Mesozoic, Paleozoic, and Precambrian eras. It also includes a section for 'LIST OF LINE SYMBOLS' defining fault types and contact symbols.

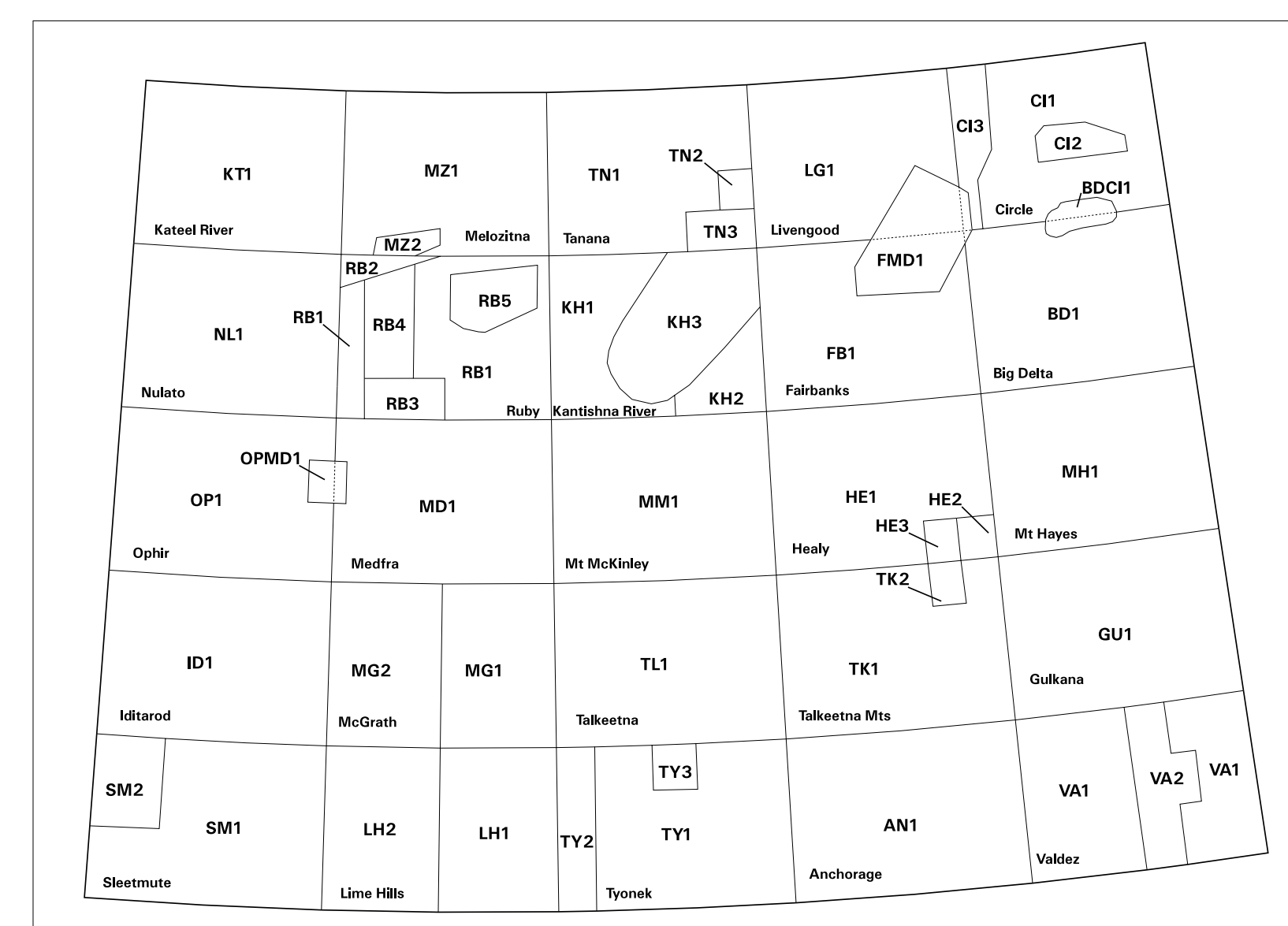


Figure 4. Sources of geologic mapping -- see Appendix 1 in text for data

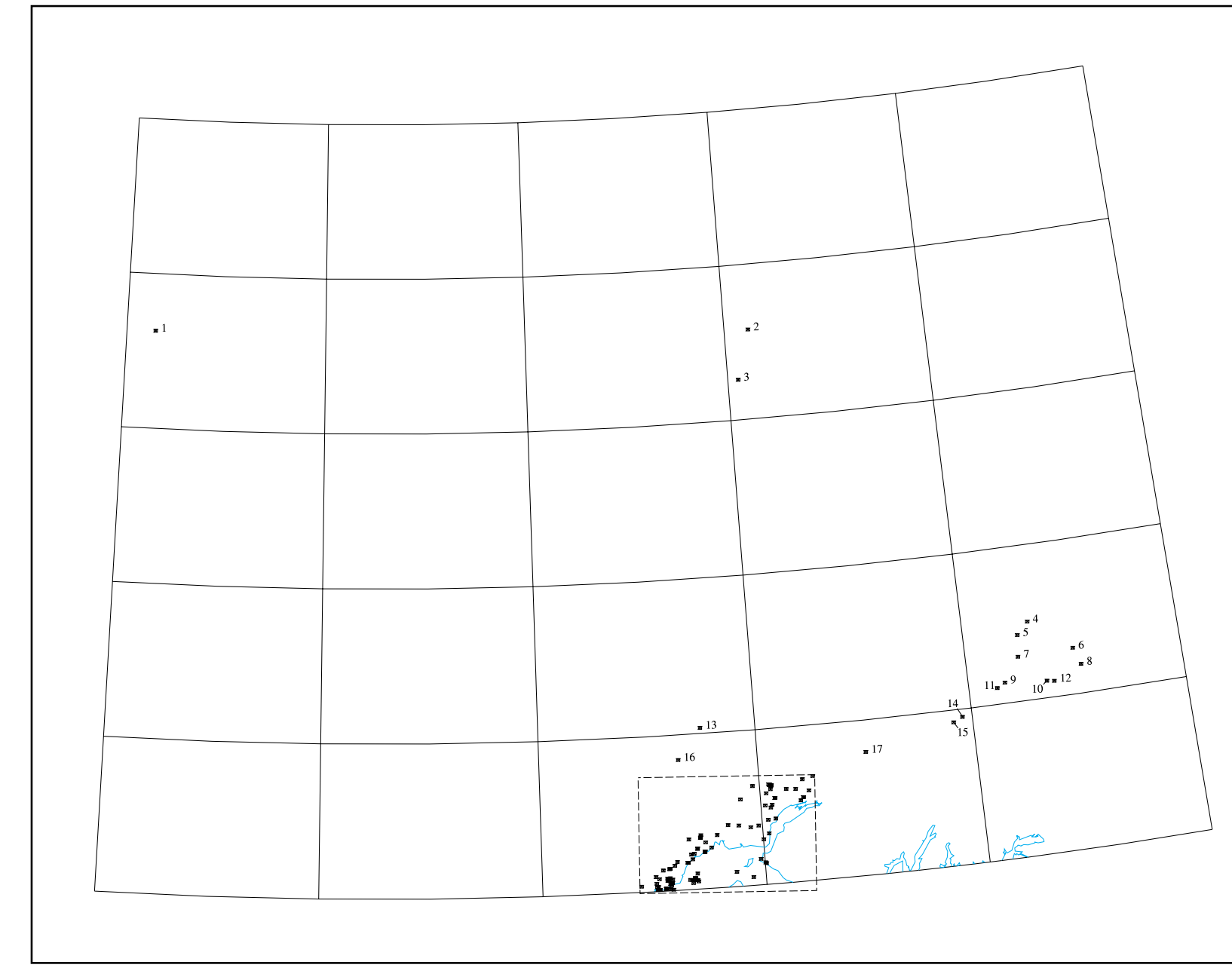


Figure 5a. Exploratory drillholes in Central (Interior) Alaska (see Table 1)

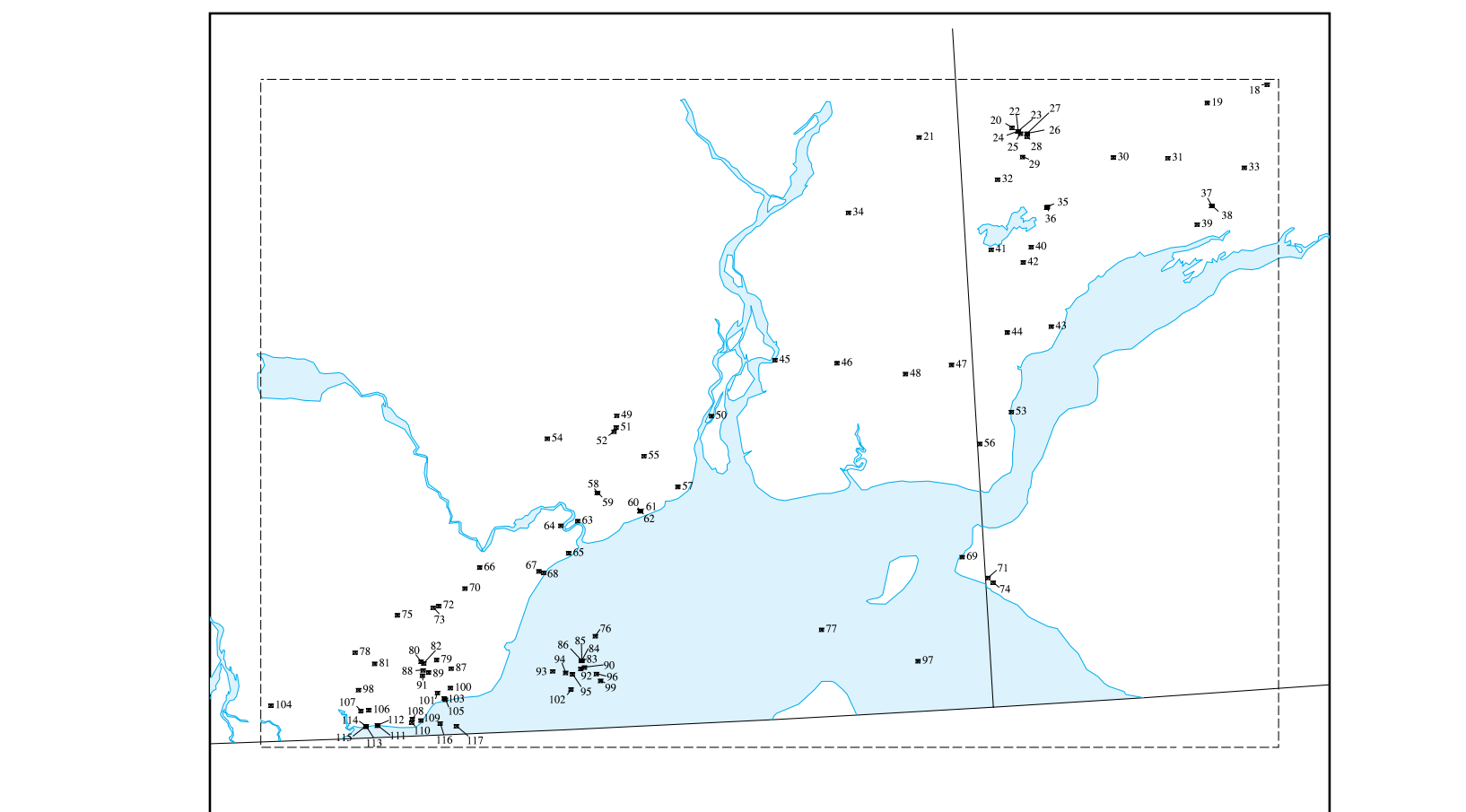
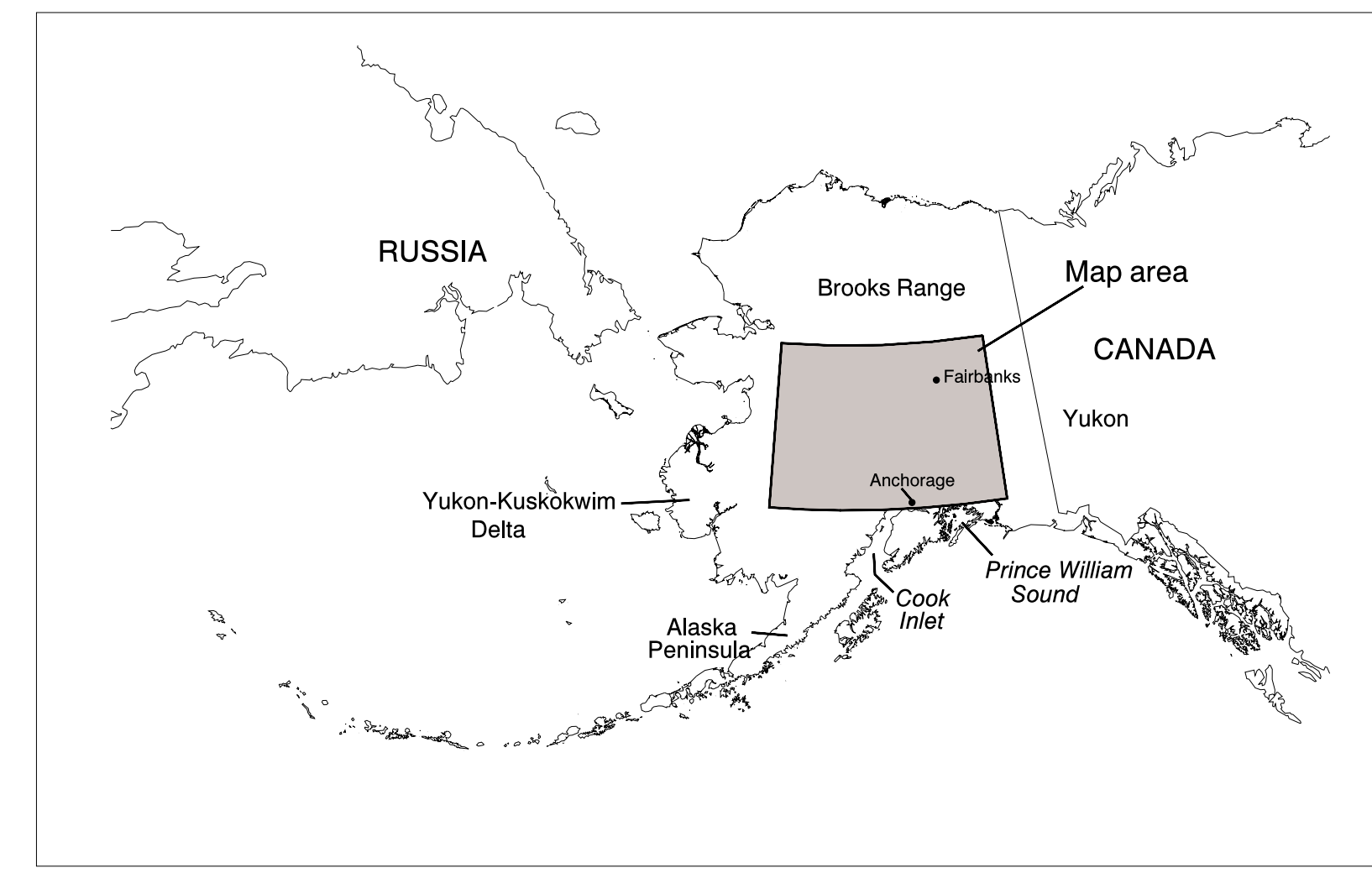


Figure 5b. Inset map showing exploratory drillholes in the Cook Inlet region



Index map showing location of map area

GEOLOGIC MAP OF CENTRAL (INTERIOR) ALASKA

by
Frederic H. Wilson, James H. Dover, Dwight C. Bradley, Florence R. Weber,
Thomas K. Bundtzen, and Peter J. Haeussler, compilers

This map is preliminary and has not been reviewed for conformity with U.S. Geological Survey editorial standards or with the North American Stratigraphic Code. Any use of trade product or firm names is for descriptive purposes only and does not imply endorsement by the U.S. Government.