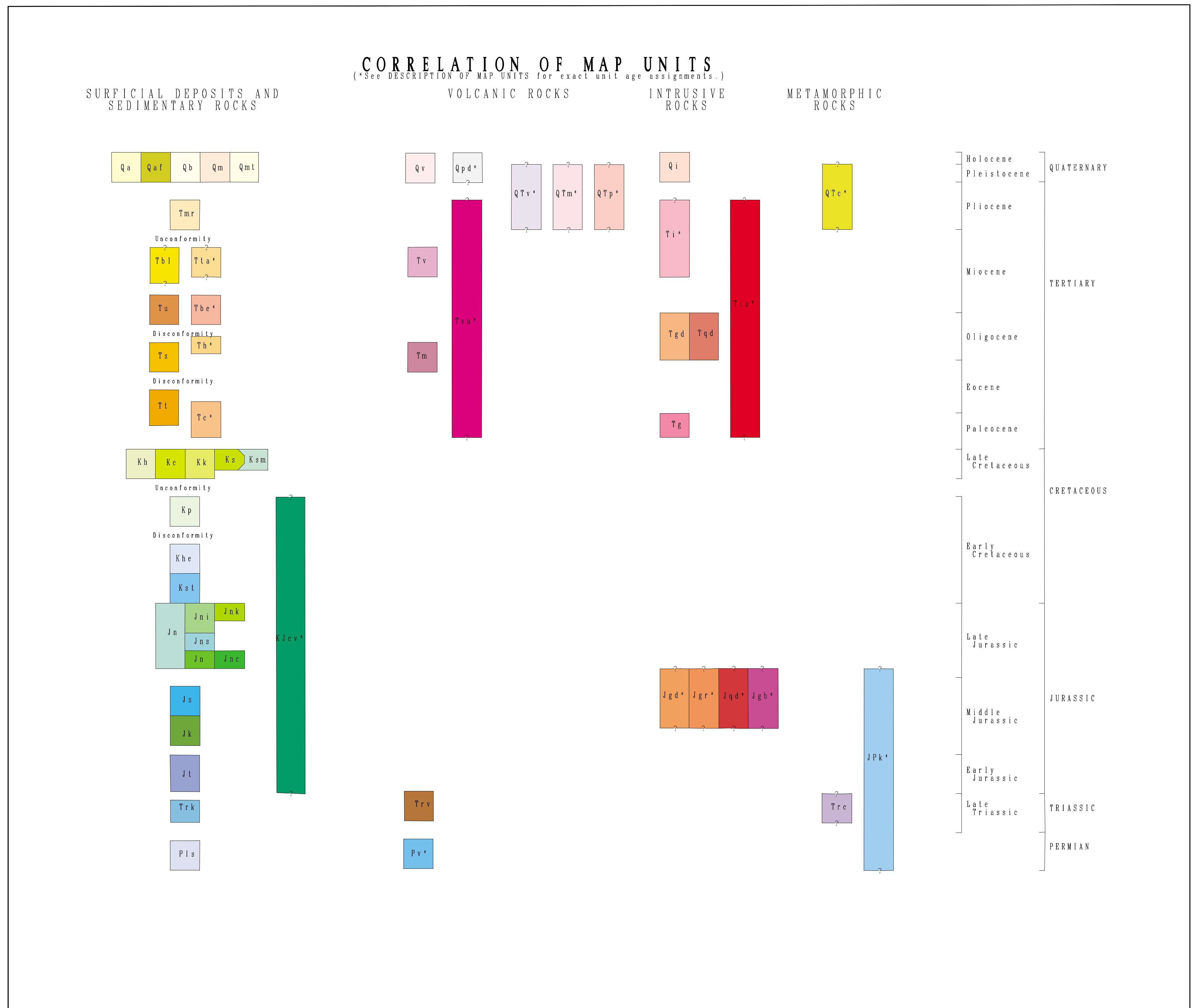
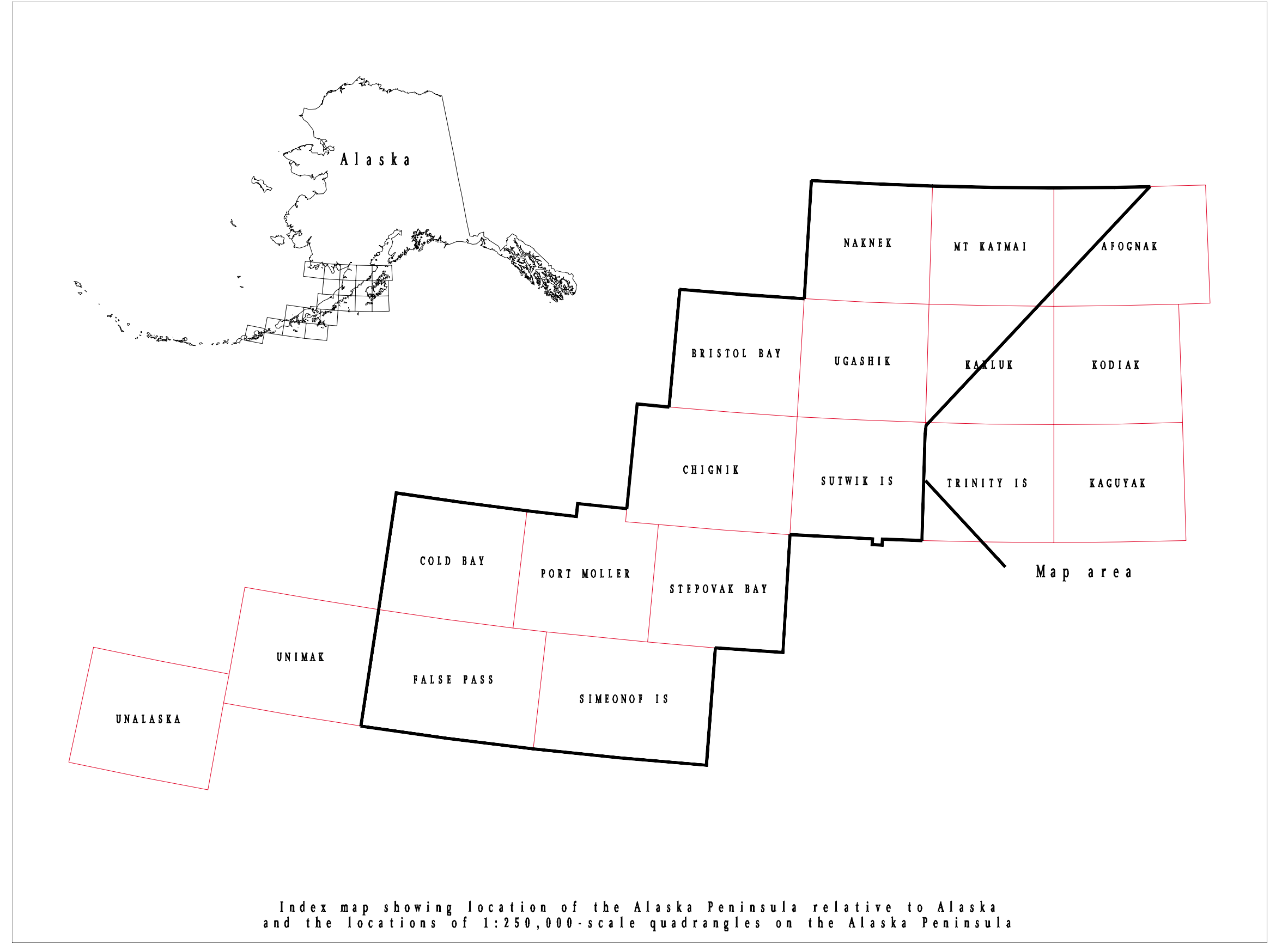
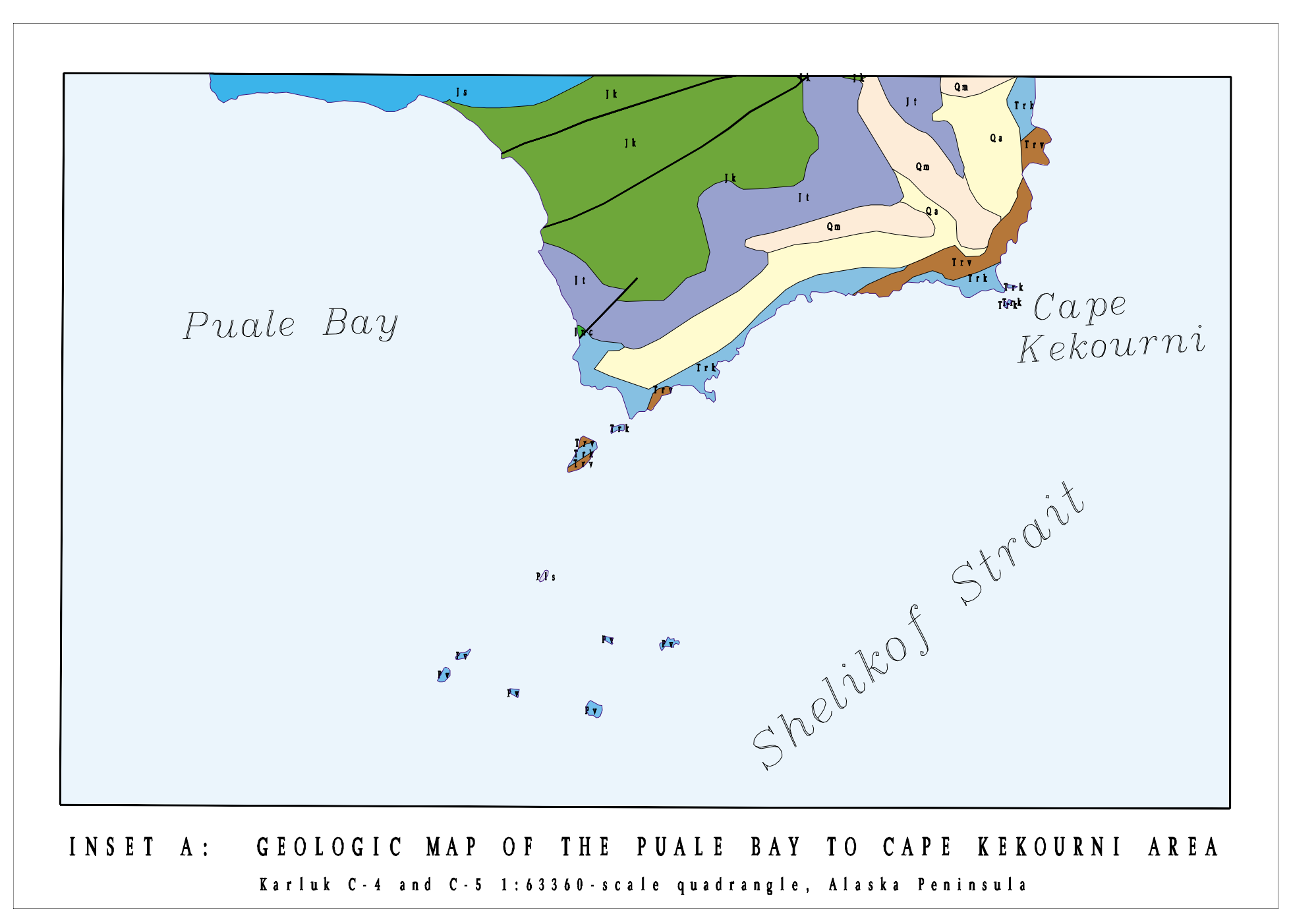
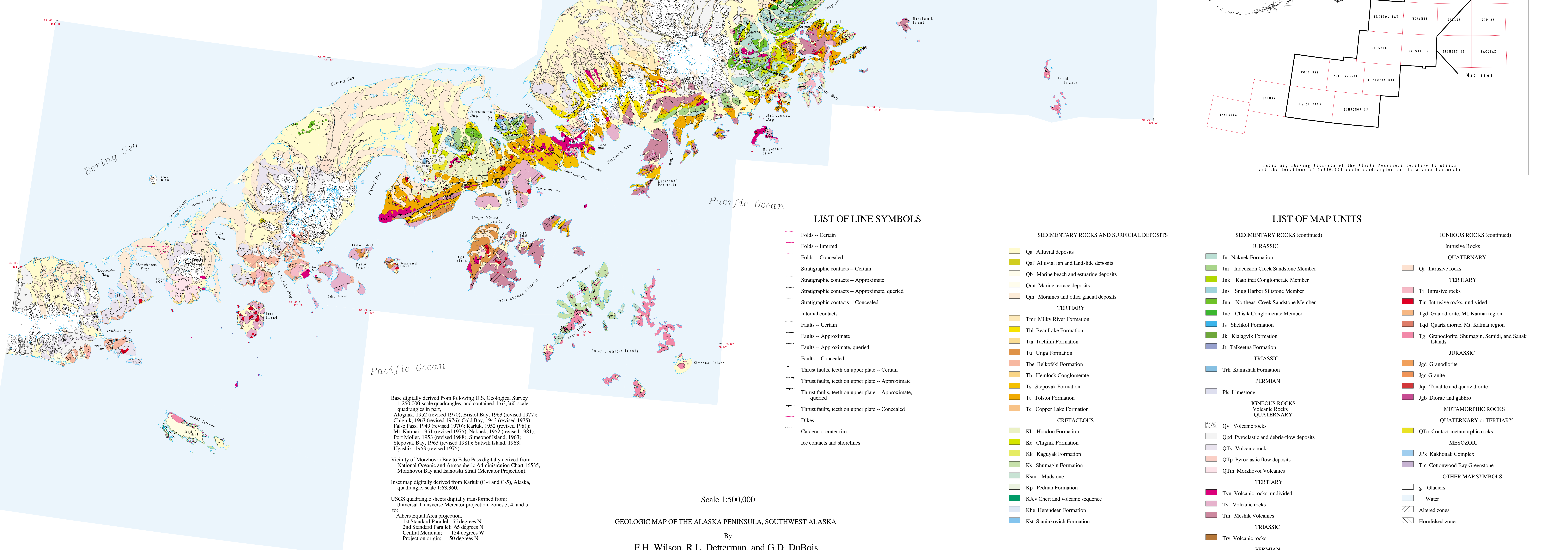


Geology mapped by Narin Albert, 1983; W.H. Allaway, Jr., 1980-81; L.M. Angeloni, 1983-85; Peter Burrell, 1983; J.E. Case, 1977-81; 1983-1985; C.L. Connor, 1982; D.P. Cox, 1977-78, 1980; John Decker, 1985; R.L. Detterman, 1977-86, 1988; G.D. DuBois, 1985, 1988, 1990; C.L. Engelhardt, 1977; B.M. Gamble, 1983-84; S.A. Zarnitski, 1986; C.D. Holloway, 1977; D.G. Howell, 1977; T.E.C. Keith, 1984; L.B. Magoon, 1979-80; Louie Marinovich, Jr., 1978, 1982, 1984; Eric Martin, 1984; Hugh McLean, 1977; J.W. Miller, 1979-86; T.P. Miller, 1973-75, 1977-78, 1979, 1981-82, 1988; M.A. Pernokas, 1983; B.L. Reed, 1983-84; J.R. Riehle, 1981-86; Nora Show, 1981-82; R.A. Spicer, 1977-78; F.R. Weber, 1983-85; F.H. Wilson, 1977-86, 1988, 1990; J.A. Wolfe, 1977-78; M.E. Young, 1977-86.

Data sources (by 1:250,000-scale quadrangle):
Afolgnak: Riehle and others, 1987, 1993; Riehle and Detterman, 1993; R.L. Detterman, written commun., 1989; interpretation of vertical airphoto, SLAR, and Landsat imagery, F.H. Wilson, 1989.
Bristol Bay: Detterman and others, 1987a, b; R.L. Detterman written commun., 1988.
Chignik: Detterman and others, 1981a, b; R.L. Detterman written commun., 1988.
Cold Bay: Kennedy and Waldron, 1955; Waldron, 1961; Burk, 1965; McLean and others, 1978; DuBois and others, 1989; F.R. Weber, written commun., 1989; T.P. Miller, written commun., 1989; interpretation of vertical airphoto, SLAR, and Landsat imagery, F.H. Wilson, 1989-91; field work, F.H. Wilson, G.D. DuBois, and W.H. White, 1990.
False Pass: Kennedy and Waldron, 1955; Waldron, 1961; Burk, 1965; McLean and others, 1978; DuBois and others, 1989; F.R. Weber, written commun., 1989; T.P. Miller, written commun., 1989; interpretation of vertical airphoto, SLAR, and Landsat imagery, F.H. Wilson, 1989-91; field work, F.H. Wilson, G.D. DuBois, and W.H. White, 1990.
Karluk: Detterman and others, 1987a, b; R.L. Detterman, written commun., 1988.
Mt. Katmai: Riehle and others, 1987, 1993; Riehle and Detterman, 1993; R.L. Detterman, written commun., 1989; interpretation of SLAR and Landsat imagery, F.H. Wilson, 1989.
Naknek: Riehle and others, 1987, 1993; Riehle and Detterman, 1993; Muller, 1952; interpretation of SLAR and Landsat imagery, F.H. Wilson, 1989.
Port Moller: Wilson and others, 1995; field work, F.H. Wilson, G.D. DuBois, R.L. Detterman, and W.H. White, 1989.
Simeonof Island: Wilson and others, 1995; field work, F.H. Wilson, G.D. DuBois, R.L. Detterman, and W.H. White, 1989.
Stepovak Bay: Wilson and others, 1995; field work, F.H. Wilson, G.D. DuBois, R.L. Detterman, and W.H. White, 1989.
Sutwik Island: Detterman and others, 1981a, b; R.L. Detterman written commun., 1988.
Ugashik: Detterman and others, 1987a, b; R.L. Detterman written commun., 1988.



Geological Map of the Alaska Peninsula, Southwest Alaska
Scale 1:500,000
By
F.H. Wilson, R.L. Detterman, and G.D. DuBois



LIST OF LINE SYMBOLS

- Folds -- Certain
- Folds -- Inferred
- Folds -- Concealed
- Stratigraphic contacts -- Certain
- Stratigraphic contacts -- Approximate
- Stratigraphic contacts -- Approximate, queried
- Stratigraphic contacts -- Concealed
- Internal contacts
- Faults -- Certain
- Faults -- Approximate
- Faults -- Approximate, queried
- Faults -- Concealed
- Thrust faults, teeth on upper plate -- Certain
- Thrust faults, teeth on upper plate -- Approximate
- Thrust faults, teeth on upper plate -- Approximate, queried
- Thrust faults, teeth on upper plate -- Concealed
- Dikes
- Caldera or crater rim
- Ice contacts and shorelines

SEDIMENTARY ROCKS AND SURFICIAL DEPOSITS

- Qa Alluvial deposits
- Qaf Alluvial fan and landslide deposits
- Qb Marine beach and estuarine deposits
- Qm Marine terrace deposits
- Qm Moraines and other glacial deposits
- Tertiary
- Tmr Milky River Formation
- Tbl Bear Lake Formation
- Tta Tachini Formation
- Tu Unga Formation
- Tbe Belkofski Formation
- Tb Hemlock Conglomerate
- Ts Stepovak Formation
- Tt Tolstoi Formation
- Tc Copper Lake Formation
- Cretaceous
- Kh Hoodoo Formation
- Kc Chignik Formation
- Kk Kaguyak Formation
- Ks Shumagin Formation
- Km Mudstone
- Kp Pednar Formation
- Klev Chert and volcanic sequence
- Khe Herenden Formation
- Kst Stanikovich Formation

LIST OF MAP UNITS

- Jurassic
- Jn Naknek Formation
- Jni Indecision Creek Sandstone Member
- Jnk Katolna Conglomerate Member
- Jns Snug Harbor Siltstone Member
- Jnn Northeast Creek Sandstone Member
- Jnc Chisik Conglomerate Member
- Js Shelikof Formation
- Jk Kialagvik Formation
- Jt Talketna Formation
- Triassic
- Trk Kamishak Formation
- Permian
- Pis Limestone
- Igneous Rocks
- Quaternary
- Qv Volcanic rocks
- Qpd Pyroclastic and debris-flow deposits
- Qvt Volcanic rocks
- QTP Pyroclastic flow deposits
- QTM Morzhovoi Volcanics
- Tertiary
- Tvu Volcanic rocks, undivided
- Tv Volcanic rocks
- Tm Meshik Volcanics
- Triassic
- Trv Volcanic rocks
- Permian
- Pv Volcanic rocks
- Igneous Rocks (continued)
- Intrusive Rocks
- Quaternary
- QI Intrusive rocks
- Tertiary
- Ti Intrusive rocks
- Tiu Intrusive rocks, undivided
- Tgd Granodiorite, Mt. Katmai region
- Tqd Quartz diorite, Mt. Katmai region
- Tg Granodiorite, Shumagin, Semidi, and Sanak Islands
- Jurassic
- Jgd Granodiorite
- Jgr Granite
- Jqd Tonalite and quartz diorite
- Jgb Diorite and gabbro
- Metamorphic Rocks
- Quaternary or Tertiary
- QTC Contact-metamorphic rocks
- Mesozoic
- JPK Kakhonak Complex
- TRC Cottonwood Bay Greenstone
- Other Map Symbols
- g Glaciers
- Water
- Altered zones
- Nonfolded zones

Base digitally derived from following U.S. Geological Survey 1:250,000-scale quadrangles, and contained 1:63,360-scale quadrangles in part:
Afolgnak, 1952 (revised 1970); Bristol Bay, 1963 (revised 1977); Chignik, 1963 (revised 1970); Cold Bay, 1943 (revised 1975); False Pass, 1949 (revised 1970); Karluk, 1952 (revised 1981); Mt. Katmai, 1951 (revised 1975); Naknek, 1952 (revised 1981); Port Moller, 1953 (revised 1988); Simeonof Island, 1963; Stepovak Bay, 1963 (revised 1981); Sutwik Island, 1963; Ugashik, 1963 (revised 1975).

Vicinity of Morzhovoi Bay to False Pass digitally derived from National Oceanic and Atmospheric Administration Chart 16535, Morzhovoi Bay and Isanotski Strait (Mercator Projection).

Inset map digitally derived from Karluk (C-4 and C-5), Alaska, quadrangle, scale 1:63,360.

USGS quadrangle sheets digitally transformed from:
Universal Transverse Mercator projection, zones 3, 4, and 5 to:
Albers Equal Area projection,
1st Standard Parallel: 55 degrees N
2nd Standard Parallel: 65 degrees N
Central Meridian: 154 degrees W
Projection origin: 50 degrees N

Scale 1:500,000
GEOLOGIC MAP OF THE ALASKA PENINSULA, SOUTHWEST ALASKA
By
F.H. Wilson, R.L. Detterman, and G.D. DuBois